

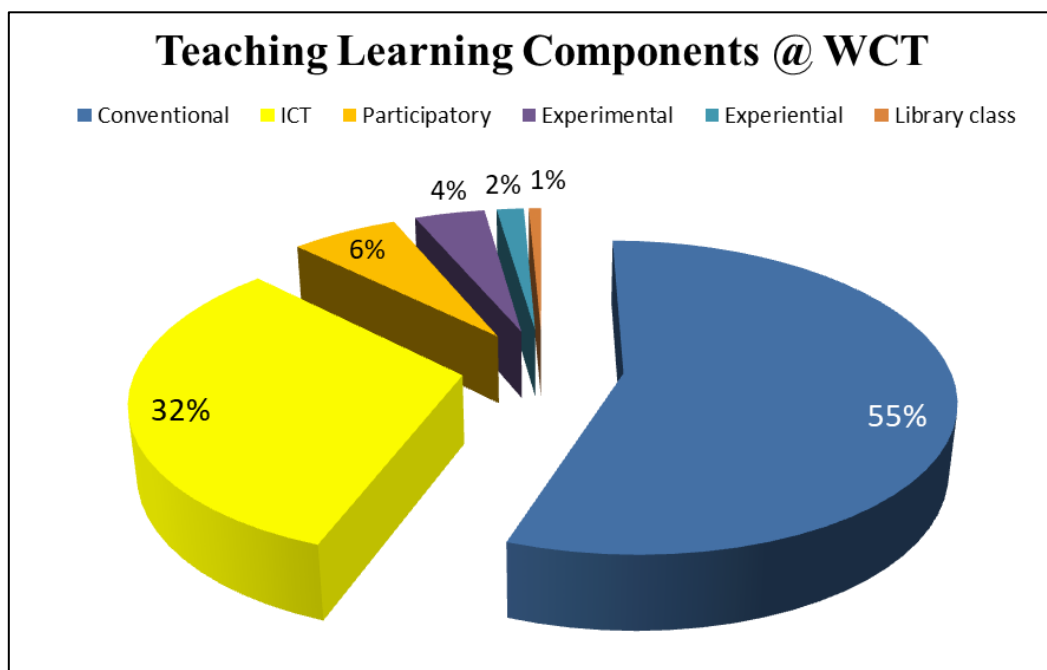
Additional Information::2.3.1

Student Centric Teaching Learning @ Women's College, Tinsukia

Student centric methods, such as experiential learning, participative learning and problem solving methodologies are used at Women's College, Tinsukia for enhancing learning experiences using ICT tools. Teaching Learning in the college is basically student centric, with a great deal of innovation incorporated with a view to making the learning experience enjoyable and impactful.

Various Innovative components incorporated into our Teaching-Learning processes are depicted below:

CLASS COMPONENTS::WOMEN'S COLLEGE, TINSUKIA (2021-2022)													
	TOTAL	CONVENTIONAL		ICT		PARTICIPATORY		EXPERIMENTAL/ PROBLEM SOLVING		EXPERIENTIAL		Library Classes	
DEPARTMENT	Number	Number	%	Number	%	Number	%	Number	%	Number	%	Number	%
ASSAMESE	1541	968	62.82	510	33.1	26	1.69	4	0.26	17	1.1	16	1.04
BENGALI	1337	949	70.98	352	26.33	29	2.17	0	0	0	0	7	0.52
ECONOMICS	1785	992	55.57	642	35.97	75	4.2	48	2.69	18	1.01	10	0.56
ENGLISH	1638	1058	64.59	250	15.26	250	15.3	10	0.61	50	3.05	20	1.22
EDUCATION	1640	940	57.32	513	31.28	55	3.35	42	2.56	80	4.88	10	0.61
HINDI	1336	822	61.53	471	35.25	13	0.97	10	0.75	2	0.15	18	1.35
MATHEMATICS	1095	651	59.45	324	29.59	21	1.92	95	8.68	0	0	4	0.37
HISTORY	716	625	87.29	35	4.888	30	4.19	10	1.4	10	1.4	6	0.84
PHILOSOPHY	1416	619	43.71	684	48.31	91	6.43	11	0.78	3	0.21	8	0.56
POLITICAL SCIENCE	1627	986	60.6	516	31.71	103	6.33	6	0.37	8	0.49	8	0.49
SANSKRIT	730	386	52.88	170	23.29	125	17.1	0	0	39	5.34	10	1.37
SOCIOLOGY	720	600	83.33	56	7.778	30	4.17	13	1.81	15	2.08	6	0.83
COMMERCE	1791	608	33.95	454	25.35	237	13.2	460	25.7	24	1.34	8	0.45
COMPUTER SC.	1291	160	12.39	950	73.59	85	6.58	62	4.8	30	2.32	4	0.31
TOTAL:	18663	10364	55.5	5927	31.8	1170	6.3	771	4.1	296	1.6	135	0.72
AVERAGE:	1333	740	55.5	423	31.8	84	6.3	55	4.1	21	1.6	10	0.72



Additional Information::2.3.1

Student Centric Teaching Learning @ Women's College, Tinsukia

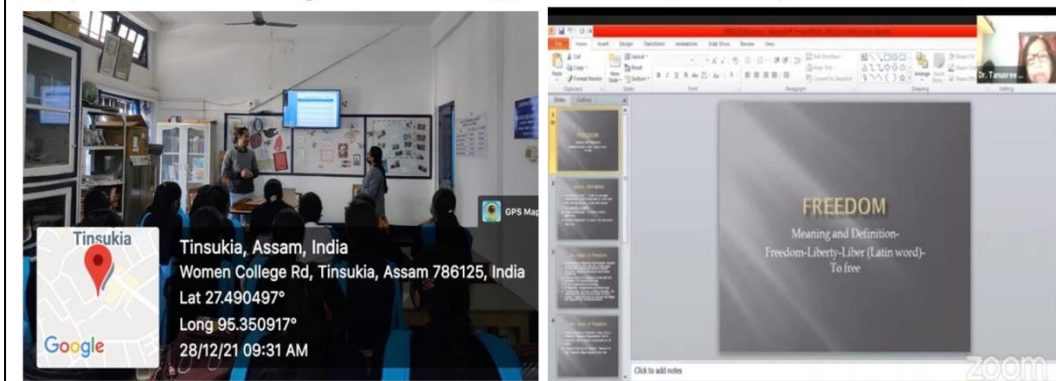
ICT assisted Learning @ Women's College, Tinsukia

(1) Students using ICT tools:



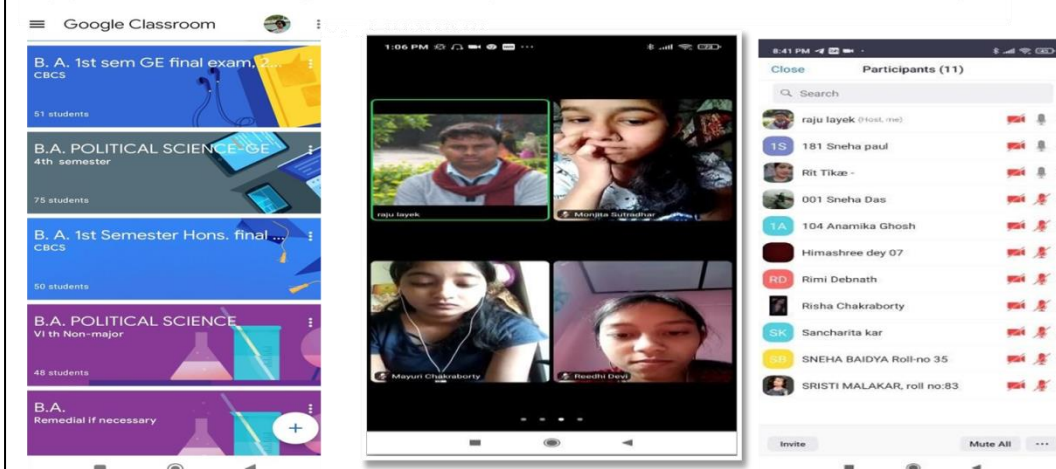
ICT assisted Learning @ Women's College, Tinsukia

(2) Teachers using ICT tools (ppt & Zoom platform):



ICT assisted Learning @ Women's College, Tinsukia

(3) Teachers using ICT tools (Google classroom & Zoom platform):



Additional Information::2.3.1

Student Centric Teaching Learning @ Women's College, Tinsukia

Experiential Learning @ Women's College, Tinsukia

(1) Hand Holding Training on ABC registration:



Experiential Learning @ Women's College, Tinsukia

(2) Hand-on Experience:



Experiential Learning @ Women's College, Tinsukia

(3) Hand-on Experience (Weaving):



Additional Information::2.3.1

Student Centric Teaching Learning @ Women's College, Tinsukia

Experiential Learning @ Women's College, Tinsukia

(4) Hand-on Experience (Organic compost making):



Experiential Learning @ Women's College, Tinsukia

(5) Field visits:



Participatory Learning @ Women's College, Tinsukia

(1) Presentations by students:

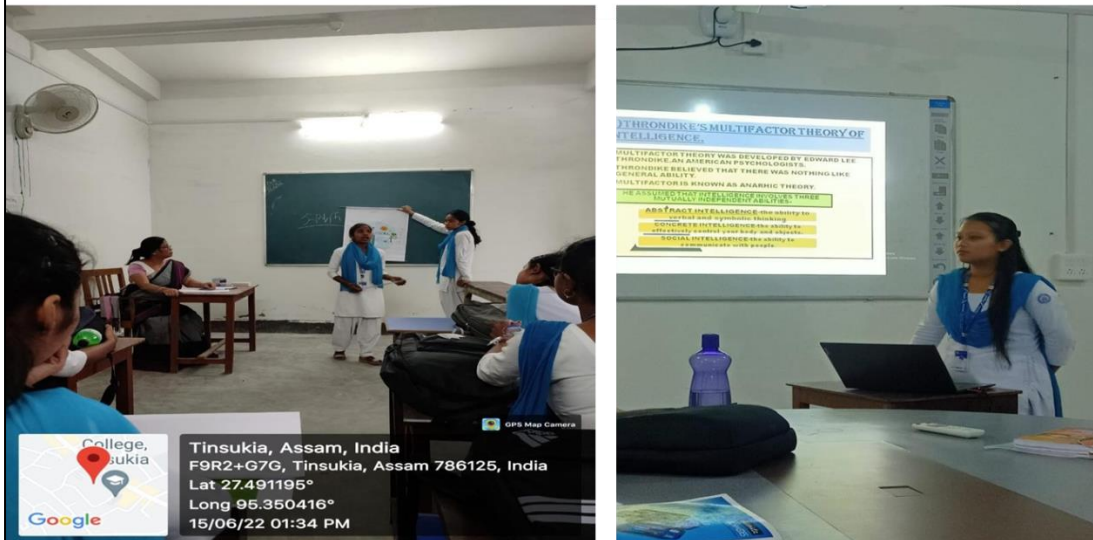


Additional Information::2.3.1

Student Centric Teaching Learning @ Women's College, Tinsukia

Participatory Learning @ Women's College, Tinsukia

(2) Presentations by students:



Experimental Learning @ Women's College, Tinsukia

(1) Experiments performed by students: