

## **Summary Report of Student Satisfaction Survey Women's College, Tinsukia Session-2019-2020**

During the session 2019-2020 the Student Satisfaction Survey (SSS) has been conducted by the IQAC of the college. A standard format has been devised for the same in consultation with the various stakeholders. In this session, due to Covid Pandemic situation the process was delayed and the survey was done during the month of September, 2020 which was in online mode. The outcomes have been analyzed and a consolidated report has been prepared.

### **Report:**

As per norm, feedbacks have been taken in this survey only from the outgoing students (6<sup>th</sup> Semester). A total of 268 out of 294 students i.e. 91.16% of the outgoing students have submitted their feedbacks. In the satisfaction survey following aspects has been addressed and questions have been put to judge on a 10point scale. The aspects were –

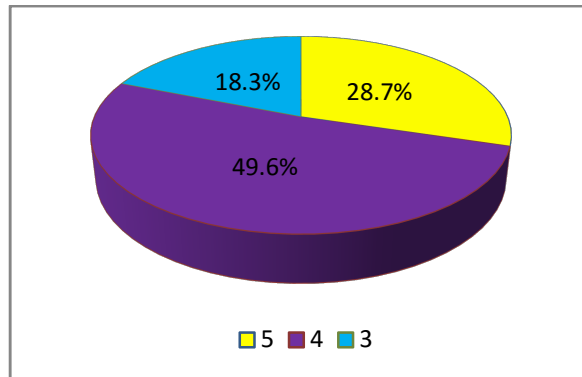
1. Overall *Academic Performance* of the college.
2. Overall grading on *Teaching Quality*.
3. *Student friendly environment* in the college.
4. *Library Facility* of the college.
5. *Administrative Office* of the college.
6. *Students Safety & Security* in the college campus.
7. *Cleanliness* of the campus.
8. *Extra-curricular activities*.
9. *Career Counseling & Placement*
10. *Hostel* of the college.
11. *Other Facilities* in the college.
12. *Principal* of the college.

On such aspects, it has been observed in the survey that –

1. **96.6%** of the participating students have ***expressed their satisfaction*** on **overall academic performance** of the college and have given a score ranging between 5 to 3 to the college out of which–

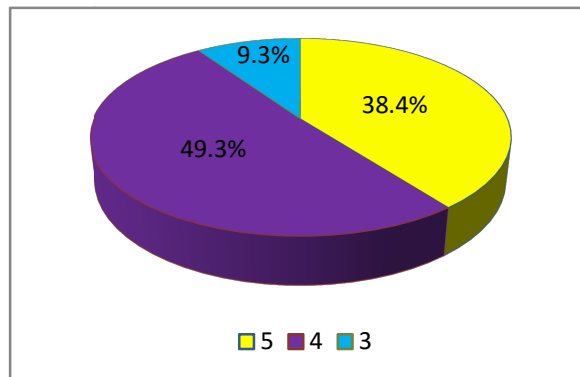
**Summary Report of Student Satisfaction Survey: Session-2019-2020**

- a) 28.7 % students have given a score 5.
- b) 49.6 % students have given a score 4.
- c) 18.3% students have given a score 3.



Grade on overall academic performance

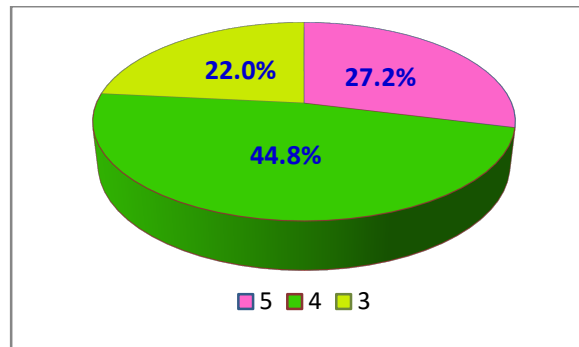
2. **97%** of the participating students have **given a score between 5 to 3** in the category of **teaching quality** of the college out of which –
- a) 38.4 % students have given a score 5.
  - b) 49.3% students have given a score 4.
  - c) 9.3% students have given a score 3.



Grade on teaching quality

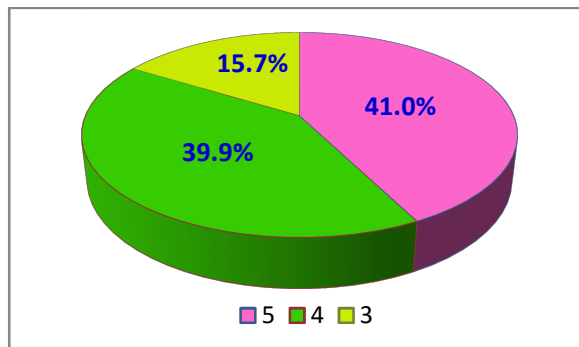
3. **94 %** of the participating students feel that the **friendly environment in the college is satisfactory** and have given a score between 5 to 3 in this category out of which –
- a) 27.2% students have given a score 5.
  - b) 44.8% students have given a score 4.
  - c) 22% students have given a score 3.

**Summary Report of Student Satisfaction Survey: Session-2019-2020**



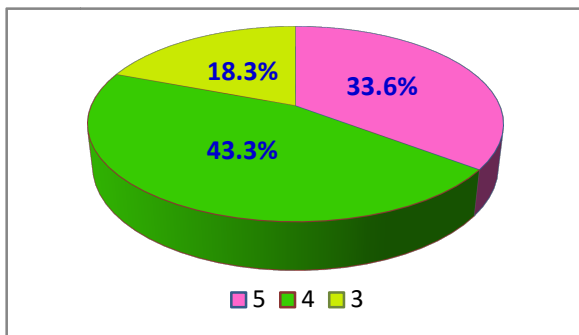
Grade on friendly environment in the college

4. **96.6 %** of the participating students were satisfied with the **Library Facility** of the college and have given a score between 5 to 3 out of which –
- a) 41% students have given a score 5.
  - b) 39.9% students have given a score 4
  - c) 15.7% students have given a score 3.



Grade on Library Facility

5. **95.2 %** of the participating students have given a score between 5 to 3 in category of **Administrative Office** out of which –
- a) 33.6% students have given a score 5.
  - b) 43.3% students have given a score 4.
  - c) 18.3% students have given a score 3.

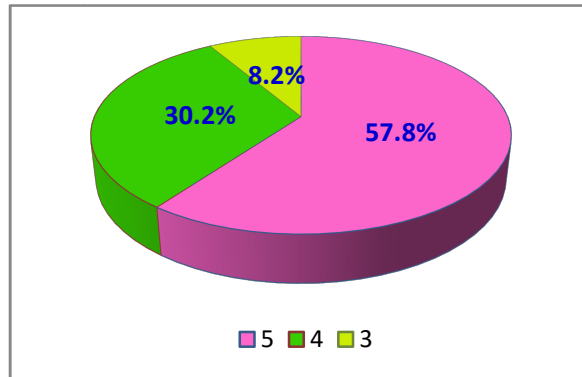


Grade on Administrative Office

**Summary Report of Student Satisfaction Survey: Session-2019-2020**

6. **96.2 %** of the participating students have given a score between 5 to 3 in category of **Students safety & security in the college campus** out of which –

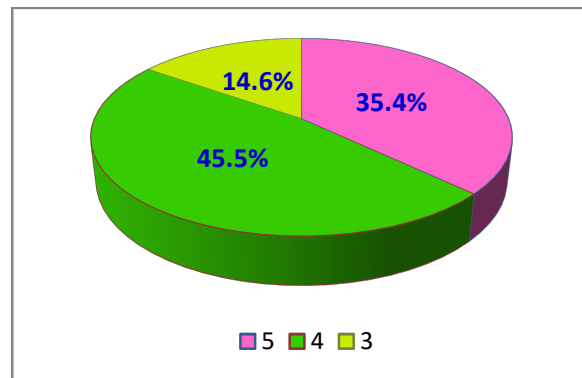
- a) 57.8 % students have given a score 5.
- b) 30.2% students have given a score 4.
- c) 8.2% students have given a score 3.



Grade on Students safety & security

7. **95.5 %** of the participating students have given a score between 5 to 3 in category of **Cleanliness of the campus** out of which –

- a) 35.4% students have given a score 5.
- b) 45.5% students have given a score 4.
- c) 14.6% students have given a score 3.

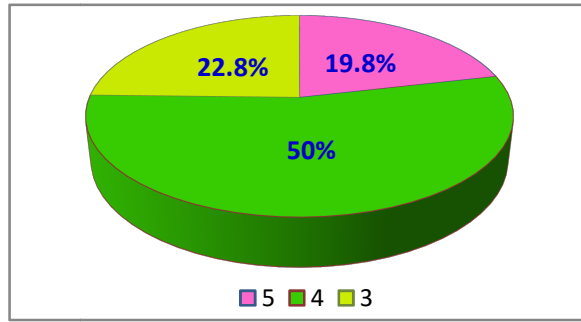


Grade on Cleanliness of the campus

8. **92.6 %** of the participating students have given a score between 5 to 3 in category of **Extra-curricular activities** out of which –

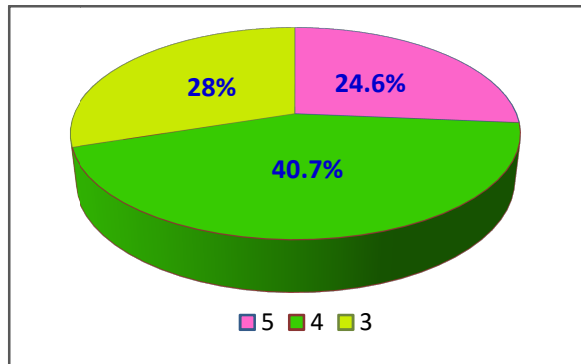
- a) 19.8% students have given a score 5.
- b) 50% students have given a score 4.
- c) 22.8% students have given a score 3.

Summary Report of Student Satisfaction Survey: Session-2019-2020



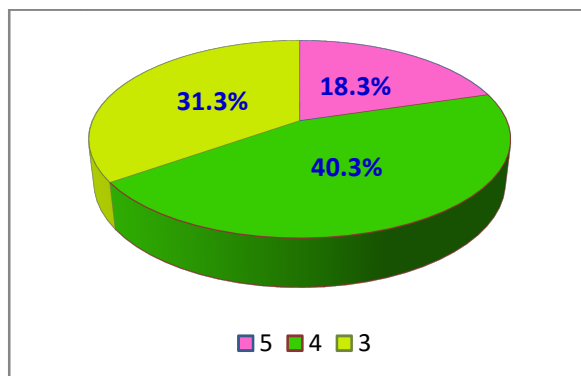
Grade on Extra-curricular activities

9. **93.3%** of the participating students have given a score between 5 to 3 in category of **Career Counseling & Placement** out of which –
- a) 24.6% students have given a score 5.
  - b) 40.7 % students have given a score 4.
  - c) 28% students have given a score 3.



Grade on Career Counseling & Placement

10. **89.9 %** of the participating students have given a score between 5 to 3 in category of college **Hostel** out of which –
- a) 18.3% students have given a score 5.
  - b) 40.3% students have given a score 4.
  - c) 31.3% students have given a score 3.

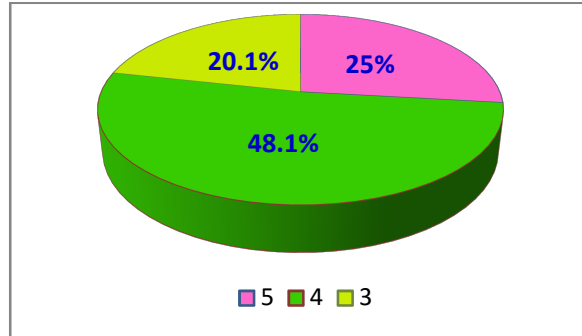


Grade on college Hostel

**Summary Report of Student Satisfaction Survey: Session-2019-2020**

11. **93.2 %** of the participating students have given a score between 5 to 3 in category of **Other Facilities** of the college out of which –

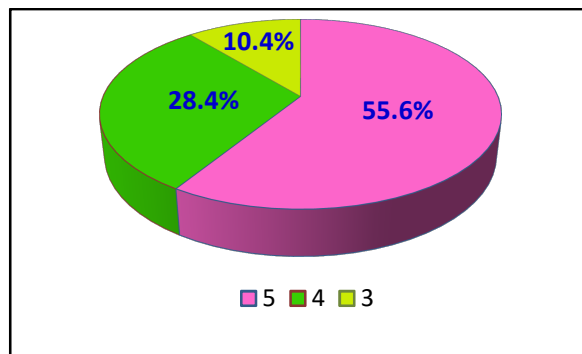
- a) 25% students have given a score 5.
- b) 48.1% students have given a score 4.
- c) 20.1% students have given a score 3.



Grade on Other Facilities

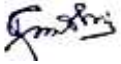
12. **94.4 %** of the participating students have given a score between 5 to 3 in category of **Principal** of the college out of which –

- a) 55.6% students have given a score 5.
- b) 28.4% students have given a score 4.
- c) 10.4% students have given a score 3.



Grade on Principal

The results of the SSS appears to be satisfactory students have given good grades to the college on majority of the aspects covered by the survey. However, the college administration takes serious note on the dissatisfaction shown by the students on some aspects and has decided to put systematic approach so that it can be minimized in the days to come.

  
Principal  
Women's College, Tinsukia  
Principal  
Women's College, Tinsukia