

# Summary Report of Student Satisfaction Survey

## Women's College, Tinsukia

### Session :: 2021-2022

In the month of June, 2022 in online mode, the Student Satisfaction Survey (SSS) for the Academic Year 2021-2022 has been conducted by the IQAC of the college. A Google Form has been devised for the same. The outcomes have been analyzed and a consolidated report has been prepared.

#### Report:

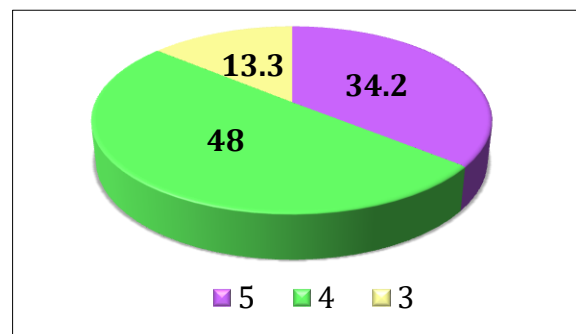
The survey has been done among the outgoing students (6<sup>th</sup> Semester) only. A total of 196 out of 280 students i.e. 70% of the outgoing students have participated in it. In the satisfaction survey following aspects has been addressed and questions have been put to judge on a 5 point scale. The aspects were–

1. Overall *Academic Performance* of the college.
2. Overall grading on *Teaching Quality*.
3. *Student friendly environment* in the college.
4. *Library Facility* of the college.
5. *Administrative Office* of the college.
6. *Students Safety & Security* in the college campus.
7. *Cleanliness* of the campus.
8. *Extra-curricular activities*.
9. *Career Counseling & Placement*
10. *Hostel* of the college.
11. *Other Facilities* in the college.
12. *Principal* of the college.

On such aspects, it has been observed in the survey that –

1. **95.5%** of the participating students have *expressed their satisfaction* on **overall academic performance** of the college and have given a score ranging between 5 to 3 to the college out of which–

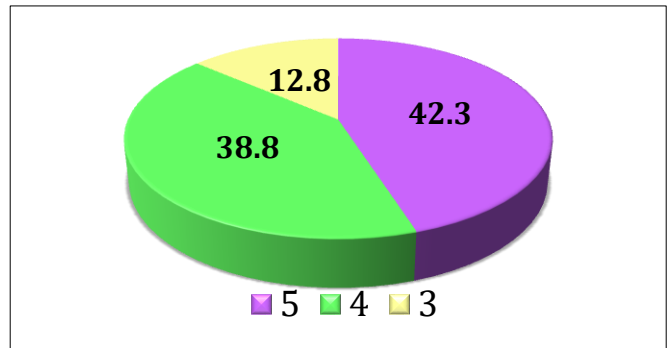
- a) 34.2% students have given a score 5.
- b) 48% students have given a score 4.
- c) 13.3% students have given a score 3.



Grade on overall academic performance

2. **93.9%** of the participating students have **given a score between 5 to 3** in the category of **teaching quality** of the college out of which –

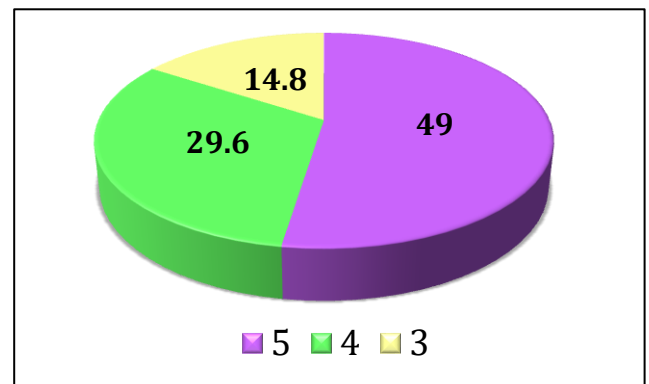
- a) 42.3% students have given a score 5.
- b) 38.8% students have given a score 4.
- c) 12.8% students have given a score 3.



Grade on teaching quality

3. **93.4%** of the participating students feel that the **friendly environment in the college is satisfactory** and have given a score between 5 to 3 in this category out of which –

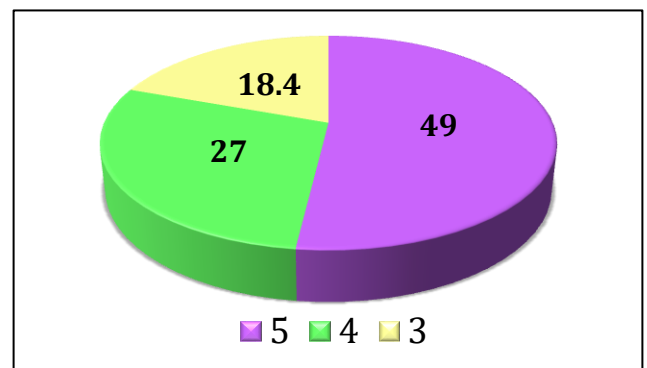
- a) 49 % students have given a score 5.
- b) 29.6 % students have given a score 4.
- c) 14.8 % students have given a score 3.



Grade on friendly environment in the college

4. **94.4%** of the participating students were satisfied with the **Library Facility** of the college and have given a score between 5 to 3 out of which –

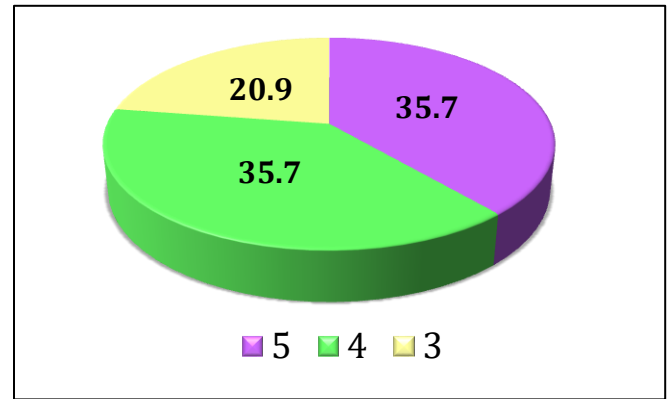
- a) 49 % students have given a score 5.
- b) 27 % students have given a score 4
- c) 18.4 % students have given a score 3.



Grade on Library Facility

5. **92.3%** of the participating students have given a score between 5 to 3 in category of **Administrative Office** out of which –

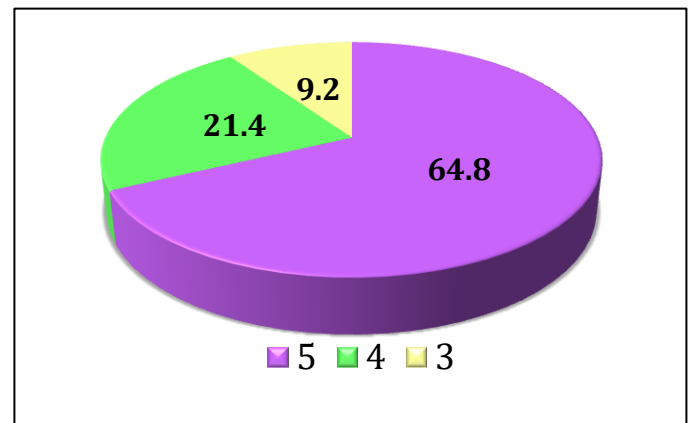
- a) 35.7% students have given a score 5.
- b) 35.7% students have given a score 4.
- c) 20.9 % students have given a score 3.



Grade on Administrative Office

6. **95.4%** of the participating students have given a score between 5 to 3 in category of **Students' safety & security in the college campus** out of which –

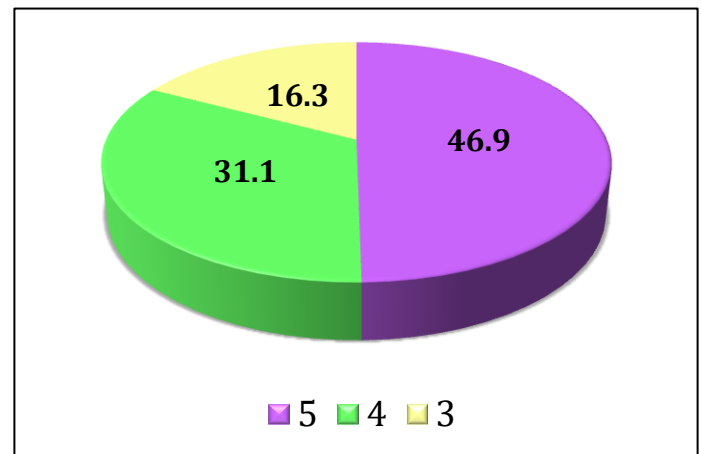
- a) 64.8% students have given a score 5.
- b) 21.4% students have given a score 4.
- c) 9.2% students have given a score 3.



Grade on Students safety & security

7. **94.3 %** of the participating students have given a score between 5 to 3 in category of **Cleanliness of the campus** out of which –

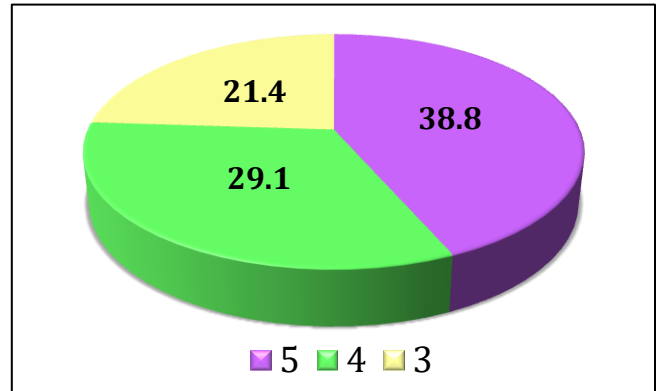
- a) 52.1% students have given a score 5.
- b) 30.3% students have given a score 4.
- c) 30.3% students have given a score 3.



Grade on Cleanliness of the campus

8. **89.3%** of the participating students have given a score between 5 to 3 in category of **Extra-curricular activities** out of which –

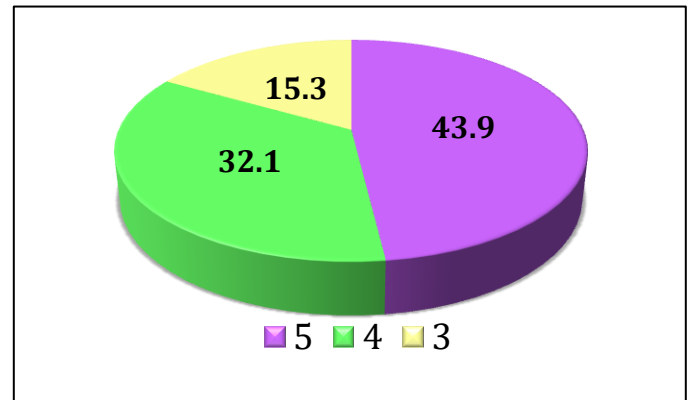
- a) 32.6% students have given a score 5.
- b) 33.7% students have given a score 4.
- c) 18.7% students have given a score 3.



Grade on Extra-curricular activities

9. **91.3%** of the participating students have given a score between 5 to 3 in category of **Career Counseling & Placement** out of which –

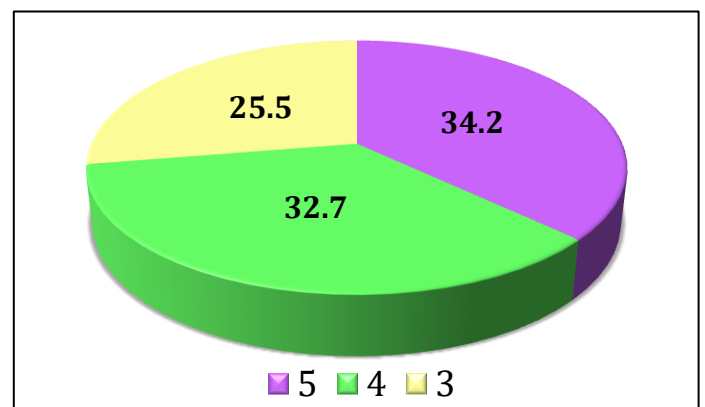
- a) 43.9 % students have given a score 5.
- b) 32.1 % students have given a score 4.
- c) 15.3 % students have given a score 3.



Grade on Career Counseling & Placement

10. **90.3%** of the participating students have given a score between 5 to 3 in category of college **Hostel** out of which –

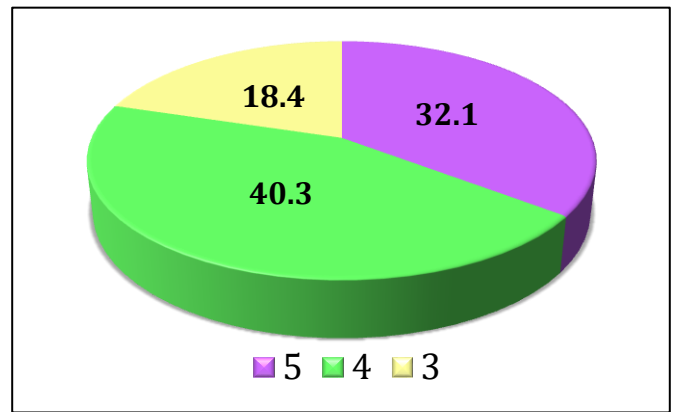
- a) 26.2% students have given a score 5.
- b) 41.6% students have given a score 4.
- c) 22.5% students have given a score 3.



Grade on college Hostel

11. **89.9%** of the participating students have given a score between 5 to 3 in category of **Other Facilities** of the college out of which –

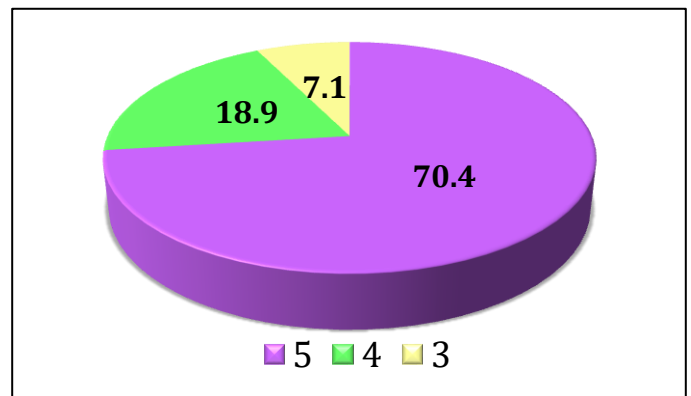
- a) 32.1% students have given a score 5.
- b) 40.3% students have given a score 4.
- c) 18.4% students have given a score 3.



Grade on Other Facilities

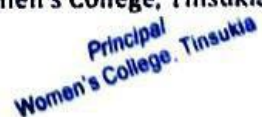
12. **96.4 %** of the participating students have given a score between 5 to 3 in category of **Principal** of the college out of which –

- a) 70.4% students have given a score 5.
- b) 18.9% students have given a score 4.
- c) 7.1% students have given a score 3.



Grade on Principal

The result of the SSS appears to be satisfactory. students have given good grades to the college on majority of the aspects covered by the survey. However, the college administration takes serious note on the dissatisfaction shown by the students on some aspects and has decided to put systematic approach so that it can be minimized in the days to come.

  
Principal  
Women's College, Tinsukia  
  
Principal  
Women's College, Tinsukia