

**PROGRAMME OUTCOME ATTAINMENT ANALYSIS (POAA)**  
**WOMEN'S COLLEGE, TINSUKIA**  
**BATCH: 2019-2022**

**1. Introduction:**

**Program Outcome Attainment Analysis (POAA)** is a systematic means of analysing the level of attainment of the stated outcome of a program that is being offered by a department in an academic institution. Normally the POAA is done under specific categories that can provide a good insight into the academic performance of a department and assess and evaluate the department as a successful provider of a University approved curriculum/ program.

Women's College, Tinsukia, an affiliated college under the Dibrugarh University is an undergraduate institution offering Honours Programmes in Arts and Commerce. Every department of the college offering specific program has its own stated **Program Outcome**, which is uploaded at the college website at the beginning of every academic session. At the end of every session, after the declaration of the results by the University, the departments prepare their respective POAA and submit to the IQAC. On receipt of POAAs from all departments, the IQAC prepares the overall POAA for the batch using the data received from the departments and from the Database of the college. The Overall POAA, on approval from the college authority, is then uploaded in the college website.

Specific heads under which the POAA is done are –

- **Enrolment pattern**
- **Dropout %**
- **Pass %**
- **Percentage of quality graduate (1<sup>st</sup> class)**
- **Progression %**
- **Employability.**

**2. Batch: 2019-2022.**

**PROGRAMME OUTCOME ATTAINMENT ANALYSIS (POAA)**  
**WOMEN'S COLLEGE, TINSUKIA**  
**BATCH: 2019-2022**

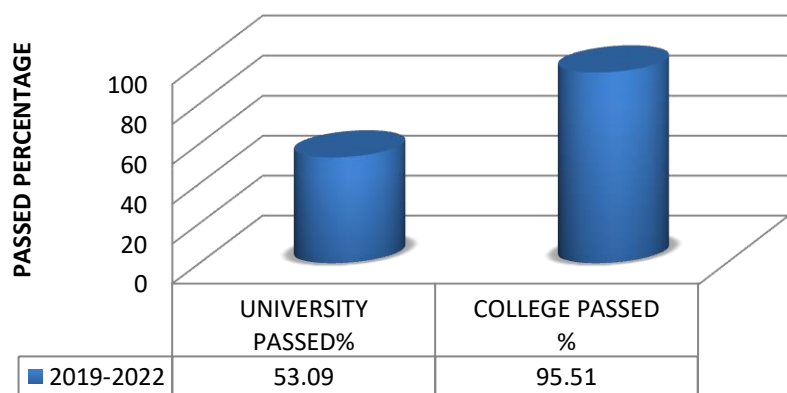
**3. Programs on Offer:**

<b>Program</b>	<b>Department</b>	<b>University Affiliation</b>	<b>Affiliation Status</b>
BA(Assamese)	Assamese	Dibrugarh University	Temporary
BA(Bengali)	Bengali	Dibrugarh University	Temporary
PGDCA & DCA	Computer Science	Dibrugarh University	Temporary
B Com (Accounting and Finance)	Commerce	Dibrugarh University	Temporary
B Com(Banking and Insurance)	Commerce	Dibrugarh University	Temporary
B Com(Marketing)	Commerce	Dibrugarh University	Temporary
B A(Economics)	Economics	Dibrugarh University	Temporary
B A(Education)	Education	Dibrugarh University	Temporary
B A(English)	English	Dibrugarh University	Temporary
B A(Hindi)	Hindi	Dibrugarh University	Temporary
B A (Mathematics)	Mathematics	Dibrugarh University	Temporary
B A (Philosophy)	Philosophy	Dibrugarh University	Temporary
B A (Political Science)	Political Science	Dibrugarh University	Temporary
B A (SANSKRIT)	Sanskrit	Dibrugarh University	Temporary

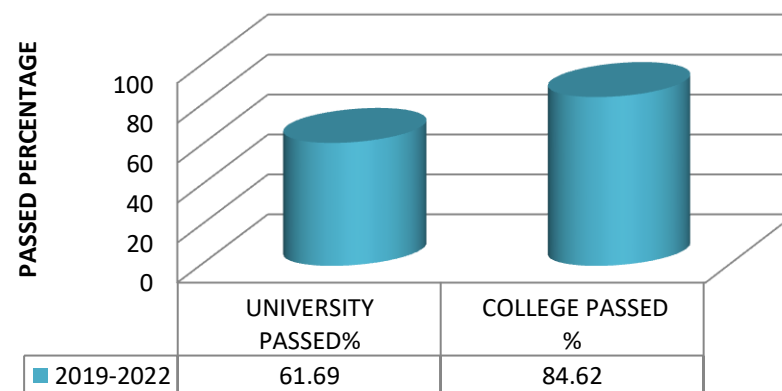
**4. Comparative Result Analysis: the overall pass % of the college versus average pass % of the University:**

**PROGRAMME OUTCOME ATTAINMENT ANALYSIS (POAA)**  
**WOMEN'S COLLEGE, TINSUKIA**  
**BATCH: 2019-2022**

**BA FINAL EXAMINATION  
(2019-2022)**



**B.COM FINAL EXAMINATION  
(2019-2022)**



# PROGRAMME OUTCOME ATTAINMENT ANALYSIS (POAA)

## WOMEN'S COLLEGE, TINSUKIA

**BATCH: 2019-2022**

### 5. Data received from the departments in connection with their POAA:

<b>Department :Assamese</b>															
Batch	No. of students joined in the	No. of students appeared	Dropout %	No. of students Passed	Pass %	No. of first class	% of first class	Vertical Progression	Horizontal Progression	Progression %	No. of placement			Remarks	
								No of students joined in PG	No. of students in other courses		Govt.	Private/ self-employed	Total		
2019-22	38	38	0.0	28	74%	28		6	5	39.3%	6	2	8		

<b>Department :Bengali</b>															
Batch	No. of students admitted	No. of students in the final Semester	Dropout %	No. of students Passed	Pass %	No. of first class	% of first class	Vertical Progression	Horizontal Progression	Progression %	No. of placement			Remarks	
								No of students joined in PG	No. of students in other courses		Govt.	Private/ self-employed	Total		
2019-22	5	5	0	5	100	5	100	1	4	100%	0	0	0		

# PROGRAMME OUTCOME ATTAINMENT ANALYSIS (POAA)

## WOMEN'S COLLEGE, TINSUKIA

**BATCH: 2019-2022**

<b>Department :Commerce</b>															
Batch	Number of students admitted into the final Semester	No. of students appeared	Dropout %	No. of students Passed	Pass %	No. of first class	% of first class	Vertical Progression	Horizontal Progression	Progression %	No. of placement			Remarks	
								No of students to PG	No. of students to other courses		Govt.	Private/ self-employed	Total		
2019-22	32	26	18.75	26	100.00%	18	69.23%	4	0	15%	2	7	9		

<b>Department :Economics</b>															
Batch	Number of students admitted	No. of students appeared	Dropout %	No. of students Passed	Pass %	No. of first class	% of first class	Vertical Progression	Horizontal Progression	Progression %	No. of placement			Remarks	
								No of students to PG	No. of students to other courses		Govt.	Private/ self-employed	Total		
2019-22	16	16	0	12	75.00	11	91.67	4		33.33	1	8	9		

# PROGRAMME OUTCOME ATTAINMENT ANALYSIS (POAA)

## WOMEN'S COLLEGE, TINSUKIA

**BATCH: 2019-2022**

<b>Department :Education</b>														
Batch	No. of students admitted into the course	No. of students appeared	Dropout %	No. of students Passed	Pass %	No. of first class	% of first class	Vertical Progression	Horizontal Progression	Progression %	No. of placement			Remarks
								No of students joined in PG	No. of students in other courses		Govt.	Private/ self-employed	Total	
2019-22	34	33	3	33	100.00	33	100.00	8	1	27.27	12	10	22	

<b>Department :English</b>														
Batch	No. of students joined in the course	No. of students appeared	Dropout %	No. of students Passed	Pass %	No. of first class	% of first class	Vertical Progression	Horizontal Progression	Progression %	No. of placement			Remarks
								No of students joined in PG	No. of students in other courses		Govt.	Private/ self-employed	Total	
2019-22	32	32	0	28	88%	22	68.75	5	5	36%	0	0	0	

# PROGRAMME OUTCOME ATTAINMENT ANALYSIS (POAA)

WOMEN'S COLLEGE, TINSUKIA

**BATCH: 2019-2022**

<b>Department :Hindi</b>														
Batch	Number of students admitted into the Program	No. of students appeared	Dropout %	No. of students Passed	Pass %	No. of first class	% of first class	Vertical Progression	Horizontal Progression	Progression %	No. of placement			Remarks
								No of students joined in PG	No. of students in other courses		Govt.	Private/ self-employment	Total	
2019-22	12	11	8.33	9	82%	9	100.00	6		66.60%			<b>0</b>	

<b>Department :Philosophy</b>														
Batch	No. of students joined in the course	No. of students appeared	Dropout %	No. of students Passed	Pass %	No. of first class	% of first class	Vertical Progression	Horizontal Progression	Progression %	No. of placement			Remarks
								No of students joined in PG	No. of students in other courses		Govt.	Private/ self-employed	Total	
2019-22	15	15	0	11	73.33%	10	91%	6		54.5%		10	5	

**PROGRAMME OUTCOME ATTAINMENT ANALYSIS (POAA)**  
**WOMEN'S COLLEGE, TINSUKIA**  
**BATCH: 2019-2022**

Department :Political Science														
Year	students admitted into	No. of students appeared	Dropout %	No. of students Passed	Pass %	No. of first class	% of first class	Vertical Progression	Horizontal Progression	Progression %	No. of placement			Remarks
								No of students joined in PG	No. of students in other courses		Govt.	Private/ self-employed		
2019-22	39	35	10.3	34	97.14%	34	100	6	3	26%	11	5	16	

**6. Graphical representation:: POAA:**

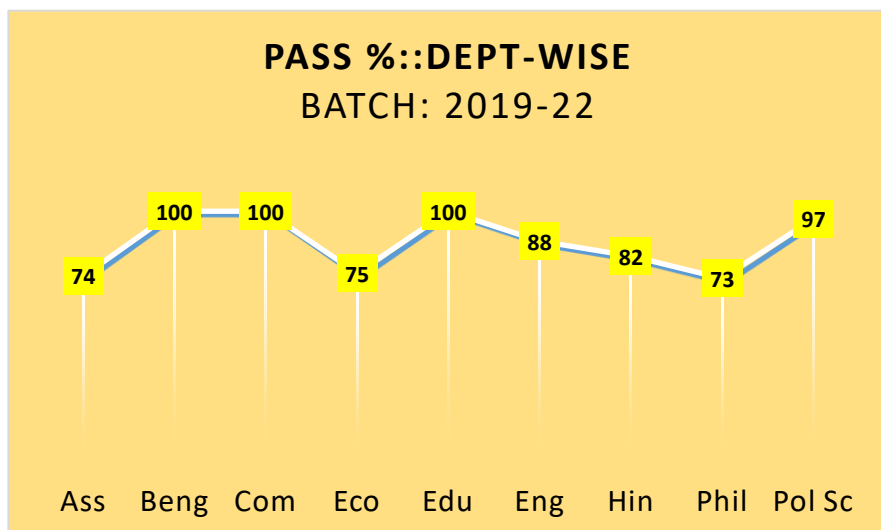


Fig.1 – Passed Percentage: Department-wise

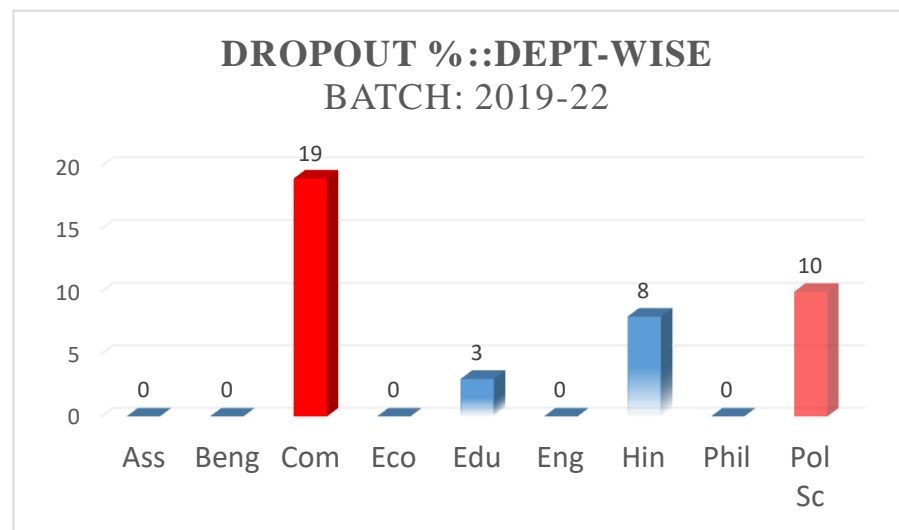


Fig.2- Dropout Percentage: Department wise



**PROGRAMME OUTCOME ATTAINMENT ANALYSIS (POAA)**  
**WOMEN'S COLLEGE, TINSUKIA**  
**BATCH: 2019-2022**

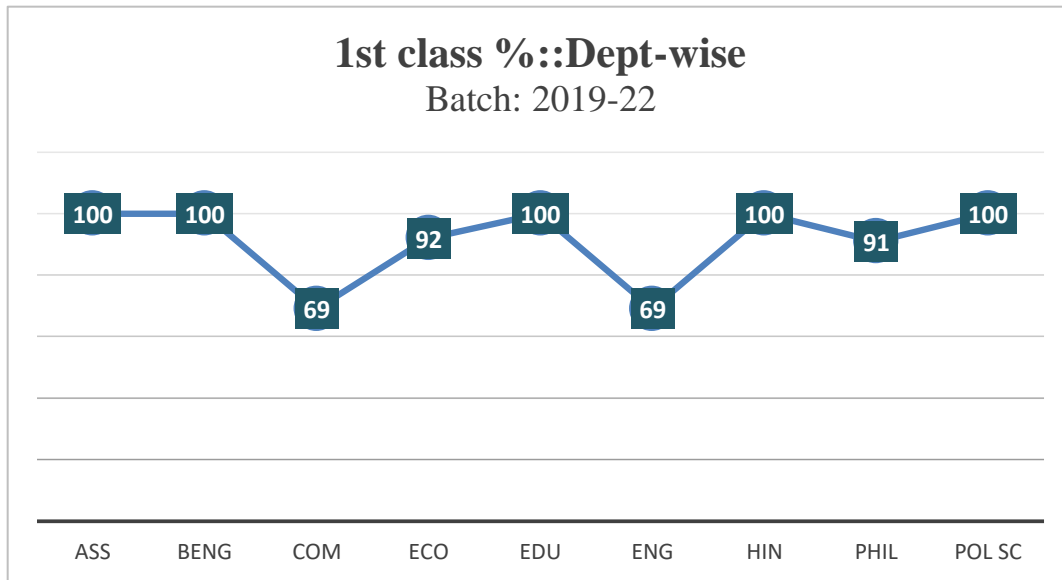


Fig. 3- 1<sup>st</sup> Class Percentage: Department wise

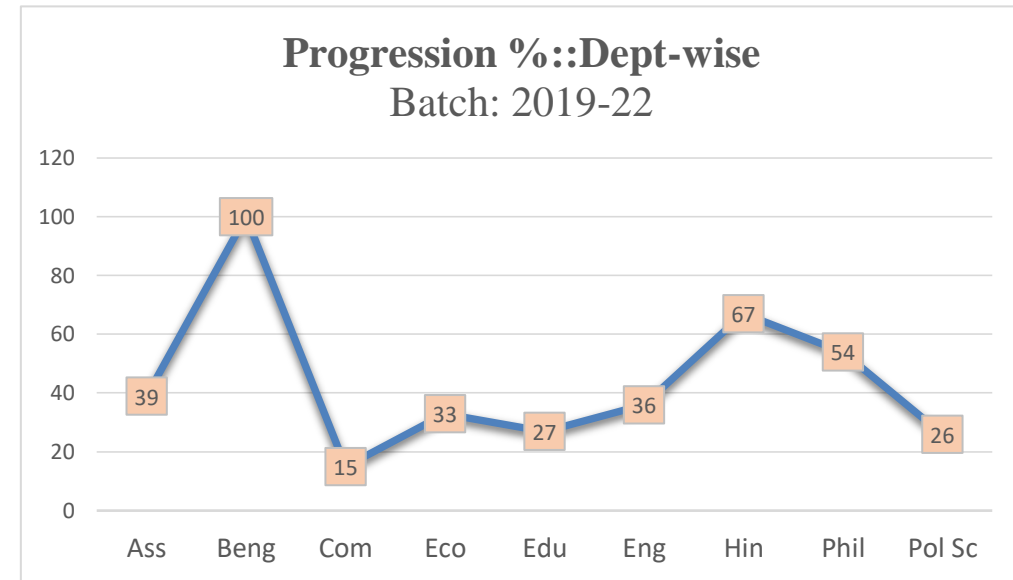


Fig.4- Progression Percentage: Department wise

**PROGRAMME OUTCOME ATTAINMENT ANALYSIS (POAA)**  
**WOMEN'S COLLEGE, TINSUKIA**  
**BATCH: 2019-2022**

**7. Observations:**

**7-1. DEPARTMENT: ASSAMESE**

- (i) **CATEGORY- A: Pass Percentage:** Pass Percentage of the Department is satisfactory. (Ref. Fig. No-1)
- (ii) **CATEGORY -B: Drop out Percentage:** Dropout percentage of the Department is NIL. (Ref. Fig. No-2)
- (iii) **CATEGORY-C: Quality Graduate:** 1<sup>st</sup> Class Graduate percentage of the Department is remarkable. (Ref. Fig. No-3)
- (iv) **CATEGORY–D: Progression Percentage:** Progression percentage is not satisfactory. Special care should be taken. (Ref. Fig. No-4).

**7-2. DEPARTMENT: BENGALI**

- (i) **CATEGORY- A: Pass Percentage:** Pass Percentage of the Department is excellent. (Ref. Fig. No-1)
- (ii) **CATEGORY -B: Drop out Percentage:** Dropout percentage of the Department is NIL. (Ref. Fig. No-2)
- (iii) **CATEGORY -C: Quality Graduate:** 1<sup>st</sup> Class Graduate percentage of the Department is extraordinary. (Ref. Fig. No-3)
- (iv) **CATEGORY–D: Progression Percentage:** Progression percentage is remarkable. (Ref. Fig. No-4)

**7-3. DEPARTMENT: COMMERCE**

- (i) **CATEGORY- A: Pass Percentage:** Pass Percentage of the Department is excellent. (Ref. Fig. No-1)
- (ii) **CATEGORY -B: Drop out Percentage:** Dropout percentage of the Department is on higher side. Specific attention is required to address the issue. (Ref. Fig. No-2).
- (iii) **CATEGORY -C: Quality Graduate:** 1<sup>st</sup> Class Graduate percentage of the Department is not up to the mark. Specific attention is required to enhance the rate of quality graduates. (Ref. Fig. No-3)
- (iv) **CATEGORY–D: Progression Percentage:** Progression percentage is not satisfactory. It needs to be addressed (Ref. Fig. No-4).

**7-4. DEPARTMENT: EDUCATION**

- (i) **CATEGORY- A: Pass Percentage:** Pass Percentage of the Department is outstanding (Ref. Fig. No-1)
- (ii) **CATEGORY -B: Drop out Percentage:** Dropout percentage of the Department is slightly on higher side. (Ref. Fig. No-2)

**PROGRAMME OUTCOME ATTAINMENT ANALYSIS (POAA)**  
**WOMEN'S COLLEGE, TINSUKIA**  
**BATCH: 2019-2022**

- (iii) **CATEGORY -C: Quality Graduate:** 1<sup>st</sup> Class Graduate percentage of the Department is remarkable. (Ref. Fig. No-3)
- (iv) **CATEGORY–D: Progression Percentage:** Progression percentage is very less. Special care should be taken to enhance the rate of progression percentage. (Ref. Fig. No-4).

7-5. **DEPARTMENT: ENGLISH**

- (i) **CATEGORY- A: Pass Percentage:** Pass Percentage of the Department is very good. (Ref. Fig. No-1)
- (ii) **CATEGORY -B: Drop out Percentage:** Dropout percentage of the Department is NIL. (Ref. Fig. No-2)
- (iii) **CATEGORY -C: Quality Graduate:** 1<sup>st</sup> Class Graduate percentage of the Department is satisfactory. However, it requires special attention to enhance the rate of quality graduates. (Ref. Fig. No-3)
- (iv) **CATEGORY–D: Progression Percentage:** Progression percentage is not up to the mark. It needs to be addressed. (Ref. Fig. No-4).

7-6. **DEPARTMENT: HINDI**

- (v) **CATEGORY- A: Pass Percentage:** Pass Percentage of the Department is satisfactory. (Ref. Fig. No-1)
- (vi) **CATEGORY -B: Drop out Percentage:** Dropout percentage of the Department is slightly on higher side. Measures should be taken to eliminate the dropout rate. (Ref. Fig. No-2)
- (vii) **CATEGORY -C: Quality Graduate:** 1<sup>st</sup> Class Graduate percentage of the Department is excellent. (Ref. Fig. No-3)
- (viii) **CATEGORY–D: Progression Percentage** is unable to meet the expected norms of the institution. (Ref. Fig. No-4)

7-7. **DEPARTMENT: PHILOSOPHY**

- (i) **CATEGORY- A: Pass Percentage:** Pass Percentage of the Department is satisfactory. (Ref. Fig. No-1)
- (ii) **CATEGORY -B: Drop out Percentage:** Dropout percentage of the Department is NIL. (Ref. Fig. No-2)
- (iii) **CATEGORY -C: Quality Graduate:** 1<sup>st</sup> Class Graduate percentage of the Department is up to the mark. (Ref. Fig. No-3)
- (iv) **CATEGORY–D: Progression Percentage:** Progression percentage of the Department is satisfactory. However care should be taken to increase the rate of progression percentage. (Ref. Fig. No-4).

**PROGRAMME OUTCOME ATTAINMENT ANALYSIS (POAA)**  
**WOMEN'S COLLEGE, TINSUKIA**  
**BATCH: 2019-2022**

7-8. **DEPARTMENT: POLITICAL SCIENCE**

- (i) **CATEGORY- A: Pass Percentage:** Pass Percentage of the Department is excellent. (Ref. Fig. No-1)
- (ii) **CATEGORY -B: Drop out Percentage** of the Department is on higher side. It needs to be addressed. (Ref. Fig. No-2)
- (iii) **CATEGORY -C: Quality Graduate:** 1<sup>st</sup> Class Graduate percentage of the Department is remarkable. (Ref. Fig. No-3)
- (iv) **CATEGORY–D: Progression Percentage:** Progression percentage of the Department is not up to the mark. It needs to be addressed. (Ref. Fig. No-4).



Principal