

PROGRAMME OUTCOME ATTAINMENT ANALYSIS (POAA)

WOMEN'S COLLEGE, TINSUKIA

BATCH: 2018-2021

1. Introduction:

Program Outcome Attainment Analysis (POAA) is a systematic means of analysing the level of attainment of the stated outcome of a program that is being offered by a department in an academic institution. Normally the POAA is done under specific categories that can provide a good insight into the academic performance of a department and assess and evaluate the department as a successful provider of a University approved curriculum/ program.

Women's College, Tinsukia, an affiliated college under the Dibrugarh University is an undergraduate institution offering Honours Programmes in Arts and Commerce. Every department of the college offering specific program has its own stated **Program Outcome**, which is uploaded at the college website at the beginning of every academic session. At the end of every session, after the declaration of the results by the University, the departments prepare their respective POAA and submit to the IQAC. On receipt of POAAs from all departments, the IQAC prepares the overall POAA for the batch using the data received from the departments and from the Database of the college. The Overall POAA, on approval from the college authority, is then uploaded in the college website.

Specific heads under which the POAA is done are –

- **Enrolment pattern**
- **Dropout %**
- **Pass %**
- **Percentage of quality graduate (1st class)**
- **Progression %**
- **Employability.**

2. Batch: 2018-2021.

PROGRAMME OUTCOME ATTAINMENT ANALYSIS (POAA)

WOMEN'S COLLEGE, TINSUKIA

BATCH: 2018-2021

3. Programs on Offer:

Program	Department	University Affiliation	Affiliation Status
BA(Assamese)	Assamese	Dibrugarh University	Temporary
BA(Bengali)	Bengali	Dibrugarh University	Temporary
PGDCA & DCA	Computer Science	Dibrugarh University	Temporary
B Com (Accounting and Finance)	Commerce	Dibrugarh University	Temporary
B Com(Banking and Insurance)	Commerce	Dibrugarh University	Temporary
B Com(Marketing)	Commerce	Dibrugarh University	Temporary
BA(Economics)	Economics	Dibrugarh University	Temporary
BA(Education)	Education	Dibrugarh University	Temporary
BA(English)	English	Dibrugarh University	Temporary
BA(Hindi)	Hindi	Dibrugarh University	Temporary
BA (Mathematics)	Mathematics	Dibrugarh University	Temporary
BA (Philosophy)	Philosophy	Dibrugarh University	Temporary
BA (Political Science)	Political Science	Dibrugarh University	Temporary
BA (SANSKRIT)	Sanskrit	Dibrugarh University	Temporary

PROGRAMME OUTCOME ATTAINMENT ANALYSIS (POAA)

WOMEN'S COLLEGE, TINSUKIA

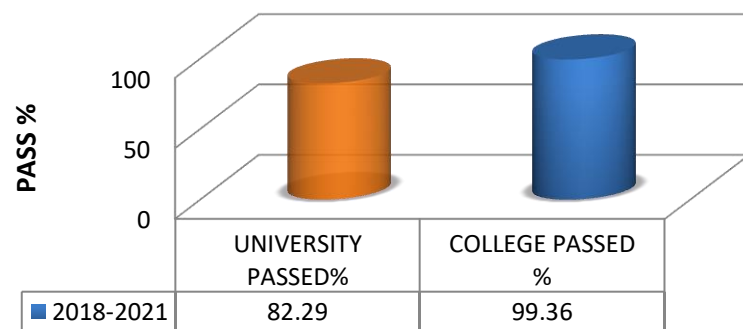
BATCH: 2018-2021

4. Comparative Result Analysis: the overall pass % of the college versus average pass % of the University.

Comparative Result

Program: B.A.

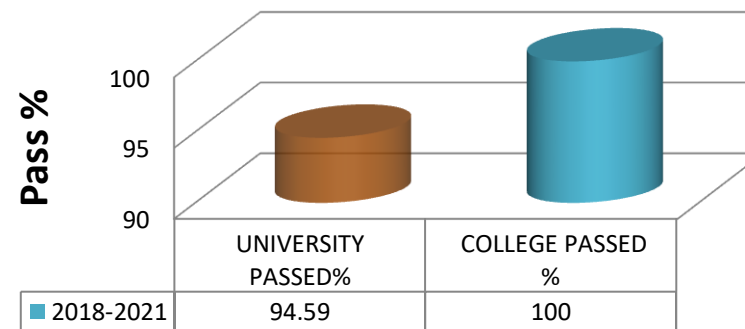
(Batch: 2018-2021)



Comparative Result

Program: B. Com.

(Batch: 2018-2021)



PROGRAMME OUTCOME ATTAINMENT ANALYSIS (POAA)

WOMEN'S COLLEGE, TINSUKIA

BATCH: 2018-2021

5. Data received from the departments in connection with their POAA:

Department :Assamese														
Batch	No. of students joined in the course	No. of students appeared	Dropout %	No. of students Passed	Pass %	No. of first class	% of first class	Vertical Progression	Horizontal Progression	Progression %	No. of placement			Remarks
								No of students joined in PG	No. of students in other courses		Govt .	Private/ self-employed	Total	
2018-21	27	25	7.4	25	100.00 %	21		10	2	48.0%	3	1	4	

Department :Bengali														
Batch	Number of students admitted into the Program	No. of students in the final Semester exam.	Dropout %	No. of students Passed	Pass %	No. of first class	% of first class	Vertical Progression	Horizontal Progression	Progression %	No. of placement			Remarks
								No of students joined in PG	No. of students in other courses		Govt .	Private/ self-employed	Total	
2018-21	14	14	0	14	100	14	100	2	9	79%	1	2	3	

PROGRAMME OUTCOME ATTAINMENT ANALYSIS (POAA)

WOMEN'S COLLEGE, TINSUKIA

BATCH: 2018-2021

Department :Commerce														
Batch	Number of students admitted into the Program	No. of students in the final Semester exam.	Dropout %	No. of students Passed	Pass %	No. of first class	% of first class	Vertical Progression	Horizontal Progression	Progression %	No. of placement			Remarks
								No of students to PG	No. of students to other courses		Govt .	Private/ self-employed	Total	
2018-21	57	49	14.04	49	100.00 %	29	59.18%	23	7	61%	0	4	4	

Department :Economics														
Batch	Number of students admitted into the Program	No. of students appeared	Dropout %	No. of students Passed	Pass %	No. of first class	% of first class	Vertical Progression	Horizontal Progression	Progression %	No. of placement			Remarks
								No of students to PG	No. of students to other courses		Govt .	Private/ self-employed		
2018-21	15	15	0	15	100.00	15	100.00	2		13.33		1		

PROGRAMME OUTCOME ATTAINMENT ANALYSIS (POAA)

WOMEN'S COLLEGE, TINSUKIA

BATCH: 2018-2021

Department :Education														
Batch	Number of students admitted into the Program	No. of students appeared	Dropout %	No. of students Passed	Pass %	No. of first class	% of first class	Vertical Progression	Horizontal Progression	Progression %	No. of placement		Total	Remarks
								No of students joined in PG	No. of students in other courses		Govt .	Private/ self-employed		
2018-21	28	28	0.00	28	100.00	28	100.00	24		85.71	2	4		

Department :English														
Batch	No. of students joined in the course	No. of students appeared	Dropout %	No. of students Passed	Pass %	No. of first class	% of first class	Vertical Progression	Horizontal Progression	Progression %	No. of placement			Remarks
								No of students joined in PG	No. of students in other courses		Govt .	Private/ self-employed	Total	
2018-21	17	17	0	17	100%	12	71	8	8	94%	0	1		

PROGRAMME OUTCOME ATTAINMENT ANALYSIS (POAA)

WOMEN'S COLLEGE, TINSUKIA

BATCH: 2018-2021

Department :Hindi														
Batch	Number of students admitted into the Program	No. of students appeared	Dropout %	No. of students Passed	Pass %	No. of first class	% of first class	Vertical Progression	Horizontal Progression	Progression %	No. of placement			Remarks
								No of students joined in PG	No. of students in other courses		Govt .	Private/ self-employment	Total	
2018-21	18	17	6	17	100.00 %	16	94.12	5		31.30%		1		

Department :Mathematics														
Batch	Number of students admitted into the Program	No. of students appeared	Dropout %	No. of students Passed	Pass %	No. of first class	% of first class	Vertical Progression	Horizontal Progression	Progression %	No. of placement			Remarks
								No of students joined in PG	No. of students in other courses		Govt .	Private/ self-employment	Total	
2018-21	4	4	0	4	100	4	100		3	75		2		

PROGRAMME OUTCOME ATTAINMENT ANALYSIS (POAA)

WOMEN'S COLLEGE, TINSUKIA

BATCH: 2018-2021

Department :Philosophy														
Batch	No. of students joined in the course	No. of students appeared	Dropout %	No. of students Passed	Pass %	No. of first class	% of first class	Vertical Progression	Horizontal Progression	Progression %	No. of placement			Remarks
								No of students joined in PG	No. of students in other courses		Govt .	Private/ self-employed	Total	
2018-21	19	19	0	19	100.00 %	19	100.00 %	4	8	63.2%		12		

Department :Political Science														
Batch	Number of students admitted into the Program	No. of students appeared	Dropout %	No. of students Passed	Pass %	No. of first class	% of first class	Vertical Progression	Horizontal Progression	Progression %	No. of placement			Remarks
								No of students joined in PG	No. of students in other courses		Govt .	Private/ self-employed		
2018-21	36	36	0.0	36	100.00 %	34	94%	21	4	69.4%	4			

PROGRAMME OUTCOME ATTAINMENT ANALYSIS (POAA)

WOMEN'S COLLEGE, TINSUKIA

BATCH: 2018-2021

6. Graphical representation:: POAA:

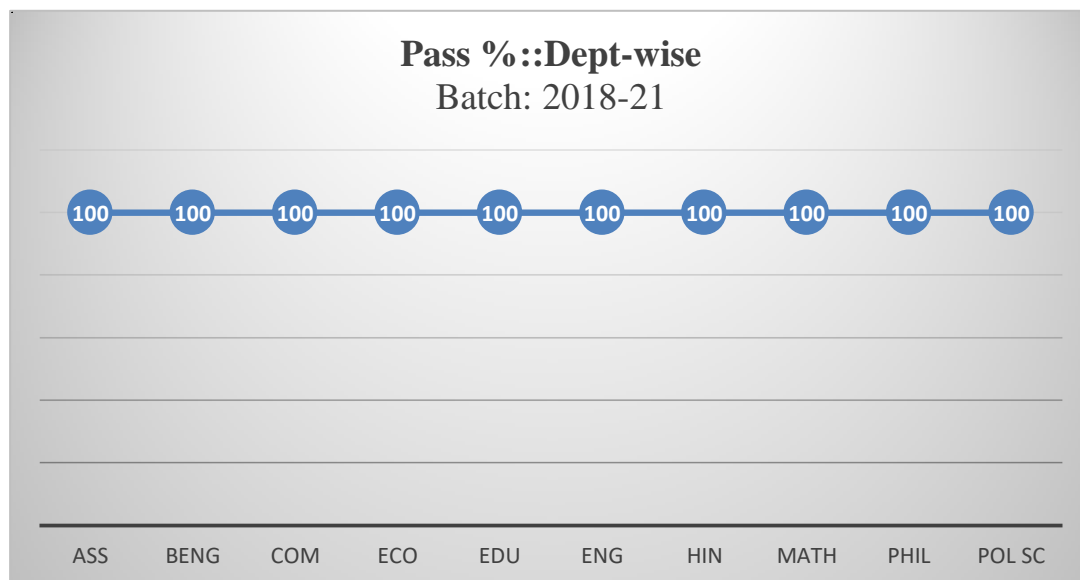


Fig.1: Pass Percentage: Department-wise

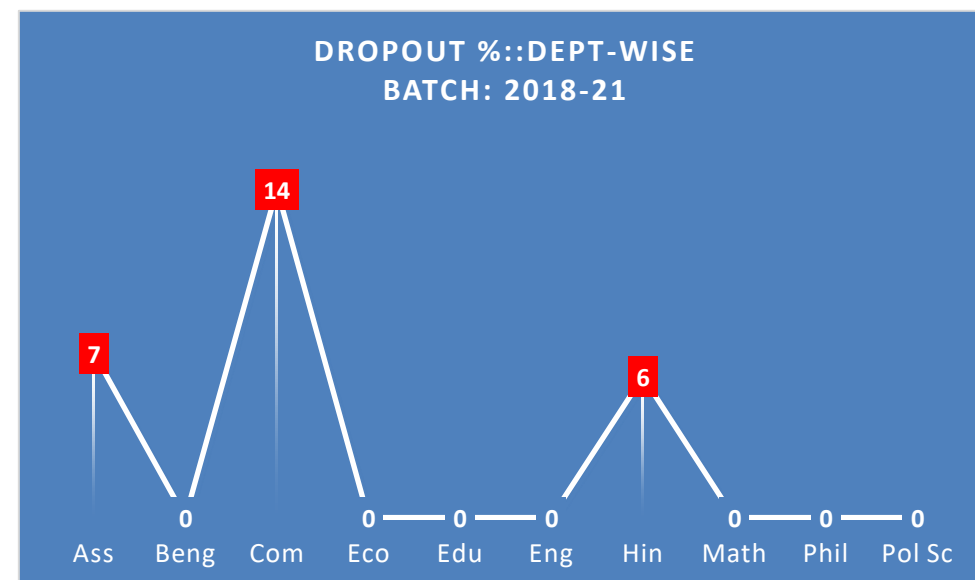


Fig.2: Dropout Percentage: Department-wise

PROGRAMME OUTCOME ATTAINMENT ANALYSIS (POAA)

WOMEN'S COLLEGE, TINSUKIA

BATCH: 2018-2021

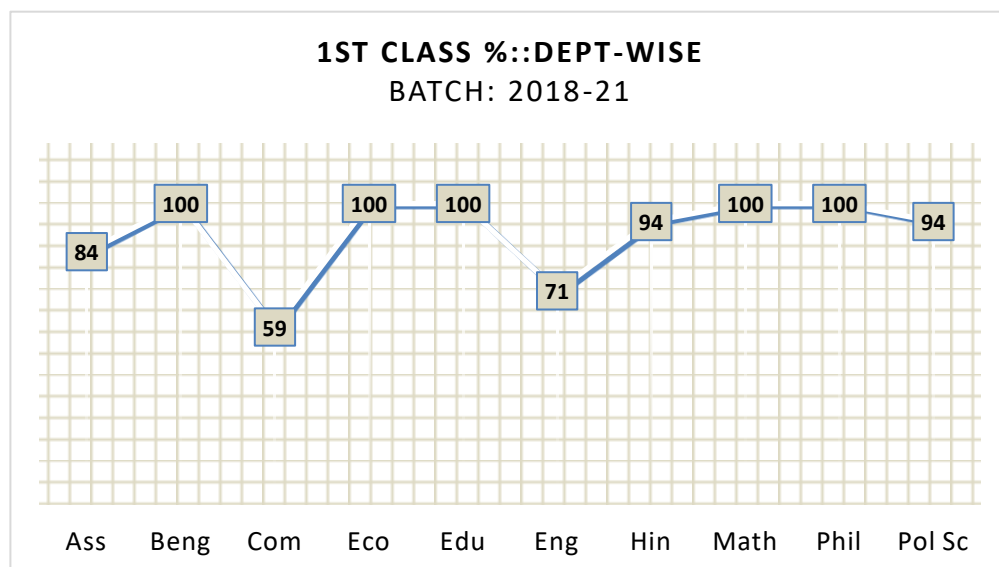


Fig.3: 1st Class Percentage: Department-wise

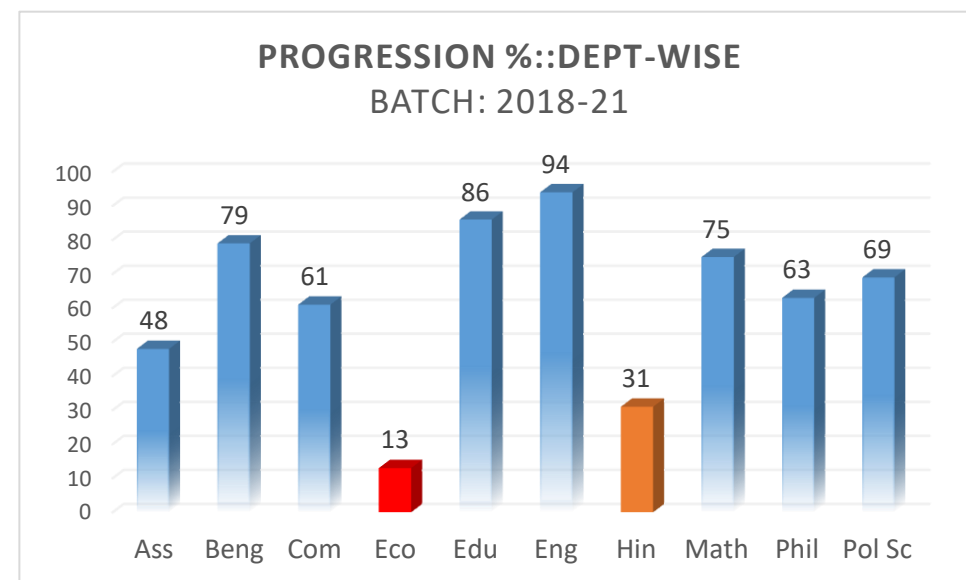


Fig.4: Progression Percentage: Department-wise

PROGRAMME OUTCOME ATTAINMENT ANALYSIS (POAA)

WOMEN'S COLLEGE, TINSUKIA

BATCH: 2018-2021

7. OBSERVATIONS:

7-1. DEPARTMENT: ASSAMESE

- (i) **CATEGORY- A: Pass Percentage:** Pass Percentage of the Department is excellent. (Ref. Fig. No-1)
- (ii) **CATEGORY -B: Drop out Percentage:** Dropout percentage of the Department is on slightly higher side. Measures should be taken to eliminate the dropout rate. (Ref. Fig. No-2)
- (iii) **CATEGORY-C: Quality Graduate:** 1st Class Graduate percentage of the Department is satisfactory. (Ref. Fig. No-3)
- (iv) **CATEGORY–D: Progression Percentage:** Progression percentage is not satisfactory. Special care should be taken. (Ref. Fig. No-4).

7-2. DEPARTMENT: BENGALI

- (i) **CATEGORY- A: Pass Percentage:** Pass Percentage of the Department is excellent. (Ref. Fig. No-1)
- (ii) **CATEGORY -B: Drop out Percentage:** Dropout percentage of the Department is **NIL**. (Ref. Fig. No-2)
- (iii) **CATEGORY -C: Quality Graduate:** 1st Class Graduate percentage of the Department is extraordinary. (Ref. Fig. No-3)
- (iv) **CATEGORY–D: Progression Percentage:** Progression percentage is satisfactory. (Ref. Fig. No-4)

7-3. DEPARTMENT: COMMERCE

- (i) **CATEGORY- A: Pass Percentage:** Pass Percentage of the Department is excellent. (Ref. Fig. No-1)
- (ii) **CATEGORY -B: Drop out Percentage:** Dropout percentage of the Department is on higher side. Specific attention is required to address the issue. (Ref. Fig. No-2)
- (iii) **CATEGORY -C: Quality Graduate:** 1st Class Graduate percentage of the Department is not up to the mark. Specific attention is required to enhance the rate of quality graduates. (Ref. Fig. No-3)
- (iv) **CATEGORY–D: Progression Percentage:** Progression percentage is satisfactory. (Ref. Fig. No-4).

7-4. DEPARTMENT: EDUCATION

- (i) **CATEGORY- A: Pass Percentage:** Pass Percentage of the Department is outstanding (Ref. Fig. No-1)

PROGRAMME OUTCOME ATTAINMENT ANALYSIS (POAA)

WOMEN'S COLLEGE, TINSUKIA

BATCH: 2018-2021

- (ii) **CATEGORY -B: Drop out Percentage:** Dropout percentage of the Department is NIL. (Ref. Fig. No-2)
- (iii) **CATEGORY -C: Quality Graduate:** 1st Class Graduate percentage of the Department is remarkable. (Ref. Fig. No-3)
- (iv) **CATEGORY-D: Progression Percentage:** Progression percentage is very good. (Ref. Fig. No-4).

7-5. DEPARTMENT: ENGLISH

- (i) **CATEGORY- A: Pass Percentage:** Pass Percentage of the Department is excellent. (Ref. Fig. No-1)
- (ii) **CATEGORY -B: Drop out Percentage:** Dropout percentage of the Department is NIL. (Ref. Fig. No-2)
- (iii) **CATEGORY -C: Quality Graduate:** 1st Class Graduate percentage of the Department is satisfactory. However, it requires special attention to enhance the rate of quality graduates. (Ref. Fig. No-3)
- (iv) **CATEGORY-D: Progression Percentage:** Progression percentage is satisfactory. (Ref. Fig. No-4).

7-6. DEPARTMENT: HINDI

- (v) **CATEGORY- A: Pass Percentage:** Pass Percentage of the Department is remarkable. (Ref. Fig. No-1)
- (vi) **CATEGORY -B: Drop out Percentage:** Dropout percentage of the Department is slightly on higher side. Measures should be taken to eliminate the dropout rate. (Ref. Fig. No-2)
- (vii) **CATEGORY -C: Quality Graduate:** 1st Class Graduate percentage of the Department is very satisfactory. (Ref. Fig. No-3)
- (viii) **CATEGORY-D: Progression Percentage** is unable to meet the expected norms of the institution. (Ref. Fig. No-4)

7-7. DEPARTMENT: MATHEMATICS

- (i) **CATEGORY- A: Pass Percentage:** Pass Percentage of the Department is excellent. (Ref. Fig. No-1)
- (ii) **CATEGORY -B: Drop out Percentage:** Dropout percentage of the Department is NIL. (Ref. Fig. No-2)
- (iii) **CATEGORY -C: Quality Graduate:** 1st Class Graduate percentage of the Department is extraordinary. (Ref. Fig. No-3)
- (iv) **CATEGORY-D: Progression Percentage:** Progression percentage is up to the mark. (Ref. Fig. No-4).

7-8. DEPARTMENT: PHILOSOPHY

- (i) **CATEGORY- A: Pass Percentage:** Pass Percentage of the Department is outstanding. (Ref. Fig. No-1)

PROGRAMME OUTCOME ATTAINMENT ANALYSIS (POAA)

WOMEN'S COLLEGE, TINSUKIA

BATCH: 2018-2021

- (ii) **CATEGORY -B: Drop out Percentage:** Dropout percentage of the Department is NIL. (Ref. Fig. No-2)
- (iii) **CATEGORY -C: Quality Graduate:** 1st Class Graduate percentage of the Department is remarkable. (Ref. Fig. No-3)
- (iv) **CATEGORY–D: Progression Percentage:** Progression percentage of the Department is satisfactory. However care should be taken to increase the rate of progression percentage. (Ref. Fig. No-4).

7-9. **DEPARTMENT: POLITICAL SCIENCE**

- (i) **CATEGORY- A: Pass Percentage:** Pass Percentage of the Department is remarkable. (Ref. Fig. No-1)
- (ii) **CATEGORY -B: Drop out Percentage:** Dropout percentage of the Department is NIL (Ref. Fig. No-2)
- (iii) **CATEGORY -C: Quality Graduate:** 1st Class Graduate percentage of the Department is excellent. (Ref. Fig. No-3)
- (iv) **CATEGORY–D: Progression Percentage:** Progression percentage of the Department is satisfactory. (Ref. Fig. No-4)



Principal