

PROGRAM OUTCOME ATTAINMENT ANALYSIS (POAA)

BATCH: 2016 2019

WOMEN'S COLLEGE, TINSUKIA

1. Introduction:

Program Outcome Attainment Analysis (POAA) is a systematic means of analysing the level of attainment of the stated outcome of a program that is being offered by a department in an academic institution. Normally the POAA is done under specific categories that can provide a good insight into the academic performance of a department and assess and evaluate the department as a successful provider of a University approved curriculum/ program.

Women's College, Tinsukia, an affiliated college under the Dibrugarh University is an undergraduate institution offering Honours Programmes in Arts and Commerce. Every department of the college offering specific program has its own stated **Program Outcome**, which is uploaded at the college website at the beginning of every academic session. At the end of every session, after the declaration of the results by the University, the departments prepare their respective POAA and submit to the IQAC. On receipt of POAAs from all departments, the IQAC prepares the overall POAA for the batch using the data received from the departments and from the Database of the college. The Overall POAA, on approval from the college authority, is then uploaded in the college website.

Specific heads under which the POAA is done are –

- **Enrolment pattern**
- **Dropout %**
- **Pass %**
- **Percentage of quality graduate (1st class)**
- **Progression %**
- **Employability.**

PROGRAM OUTCOME ATTAINMENT ANALYSIS (POAA)

BATCH: 2016 2019

WOMEN'S COLLEGE, TINSUKIA

2. **Batch:** 2016-2019.

3. **Programs on Offer:**

Program	Department	University Affiliation	Affiliation Status
BA(Assamese)	Assamese	Dibrugarh University	Temporary
BA(Bengali)	Bengali	Dibrugarh University	Temporary
PGDCA & DCA	Computer Science	Dibrugarh University	Temporary
B Com (Accounting and Finance)	Commerce	Dibrugarh University	Temporary
B Com(Banking and Insurance)	Commerce	Dibrugarh University	Temporary
B Com(Marketing)	Commerce	Dibrugarh University	Temporary
BA(Economics)	Economics	Dibrugarh University	Temporary
BA(Education)	Education	Dibrugarh University	Temporary
BA(English)	English	Dibrugarh University	Temporary
BA(Hindi)	Hindi	Dibrugarh University	Temporary
BA (Mathematics)	Mathematics	Dibrugarh University	Temporary
BA (Philosophy)	Philosophy	Dibrugarh University	Temporary
BA (Political Science)	Political Science	Dibrugarh University	Temporary
BA (Sanskrit)	Sanskrit	Dibrugarh University	Temporary

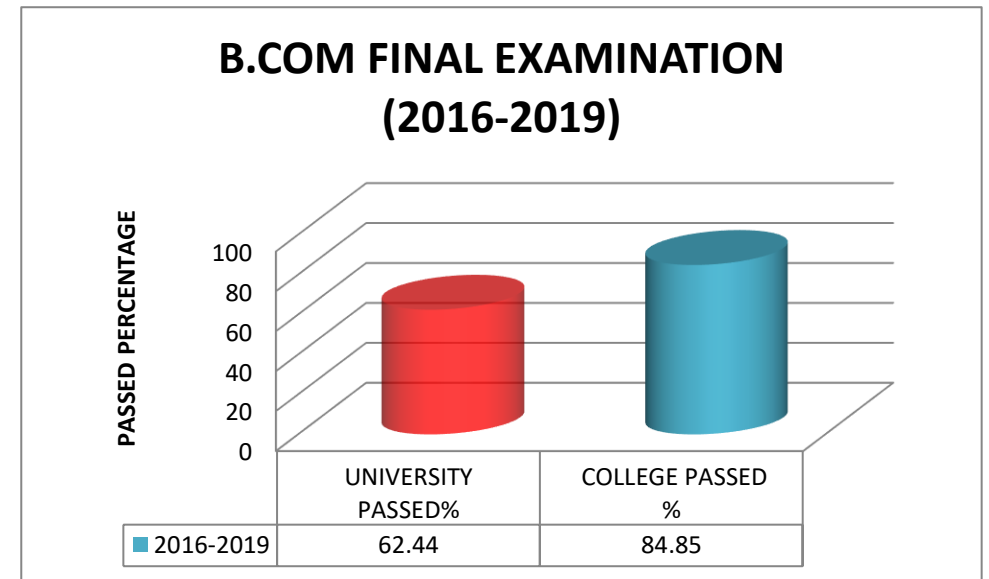
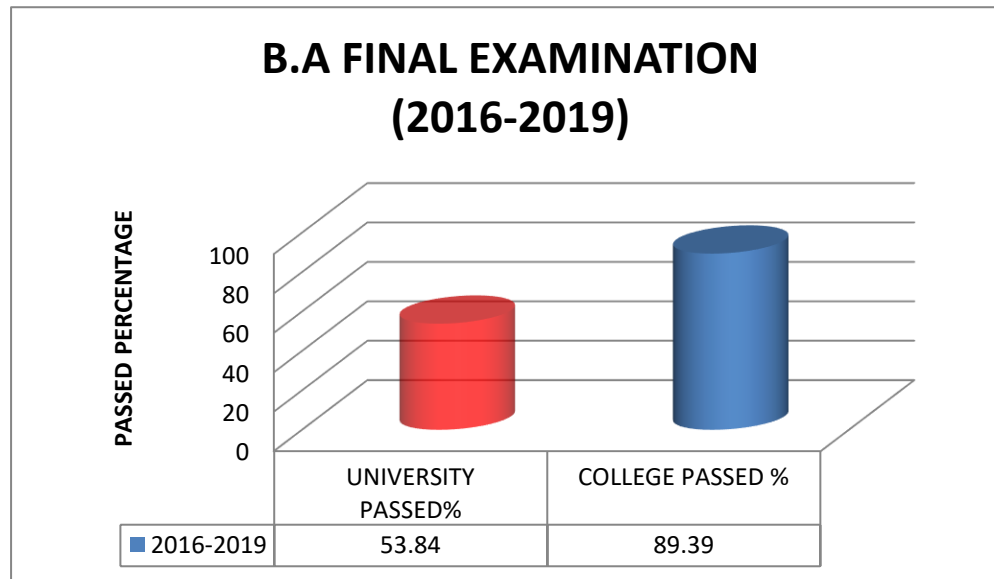
PROGRAM OUTCOME ATTAINMENT ANALYSIS (POAA)

BATCH: 2016 2019

WOMEN'S COLLEGE, TINSUKIA

4. Comparative Result Analysis: the overall pass % of the college versus average pass % of the University.

Comparative Result Analysis



PROGRAM OUTCOME ATTAINMENT ANALYSIS (POAA)

BATCH: 2016 2019

WOMEN'S COLLEGE, TINSUKIA

5. Data received from the departments in connection with their POAA:

Department :Assamese														
Batch	No. of students	No. of students	Dropout %	No. of students	Pass %	No. of first class	% of first class	Vertical Progression	Horizontal Progression	% of Progression	No. of placement			Remarks
								No of students joined in PG	No. of students in other courses		Govt.	Private/ self-employed	Total	
2016-19	42	41	2.4	27	65.85%	7	26%	5	5	37.0%	1	6	7	

Department :Bengali														
Batch	Number of	No. of students	Dropout %	No. of students	Pass %	No. of first class	% of first class	Vertical Progression	Horizontal Progression	% of Progression	No. of placement			Remarks
								No of students joined in PG	No. of students in other courses		Govt.	Private/ self-employed	Total	
2016-19	8	8	0	8	100	7	87	2	3	63%	0	6	6	

PROGRAM OUTCOME ATTAINMENT ANALYSIS (POAA)

BATCH: 2016 2019

WOMEN'S COLLEGE, TINSUKIA

Department: Commerce														
Batch	Number of students	No. of students in	Dropout %	No. of students	Pass %	No. of first class	% of first class	Vertical Progression	Horizontal Progression	% of students joined for further studies	No. of placement			Remarks
								No of students to PG	No. of students to other courses		Govt.	Private/ self-employed	Total	
2016-19	33	29	12	24	83%	14	58%	16	4	83%	0	7	7	

Department :Economics														
Year	Number of students	No. of students	Dropout %	No. of students	Pass %	No. of first class	% of first class	Vertical Progression	Horizontal Progression	% of students went for further studies	No. of placement			Remarks
								No of students to PG	No. of students to other courses		Govt.	Private/ self-employed	Total	
2016-19	24	24	0	20	83	15	75	11	6	85	2	5	7	

PROGRAM OUTCOME ATTAINMENT ANALYSIS (POAA)

BATCH: 2016 2019

WOMEN'S COLLEGE, TINSUKIA

Department :Education														
Batch	Number of students	No. of students	Dropout %	No. of students	Pass %	No. of first class	% of first class	Vertical Progression	Horizontal Progression	% of Progression	No. of placement			Remarks
								No of students joined in PG	No. of students in other courses		Govt.	Private/ self-employed	Total	
2016-19	27	27	0	26	96	25	96	21	2	88		4	4	

Department :English														
Year	No. of students	No. of students	Dropout %	No. of students	Pass %	No. of first class	% of first class	Vertical Progression	Horizontal Progression	% of Progression	No. of placement			Remarks
								No of students joined in PG	No. of students in other courses		Govt.	Private/ self-employed	Total	
2016-19	10	10	0	9	90%	6	60.00	7	2	100%	0	2	3	

PROGRAM OUTCOME ATTAINMENT ANALYSIS (POAA)

BATCH: 2016 2019

WOMEN'S COLLEGE, TINSUKIA

Department :Hindi														
Batch	Number of students	No. of students	Dropout %	No. of students	Pass %	No. of first class	% of first class	Vertical Progression	Horizontal Progression	% of Progression	No. of placement			Remarks
								No of students joined in PG	No. of students in other courses		Govt.	Private/ self-employment	Total	
2016-19								N A						

Department :Mathematics														
Batch	Number of students	No. of students	Dropout %	No. of students	Pass %	No. of first class	% of first class	Vertical Progression	Horizontal Progression	% of Progression	No. of placement			Remarks
								No of students joined in PG	No. of students in other courses		Govt.	Private/ self-employment	Total	
2018-19	4	4	0	3	75	-	0			0		3	3	

PROGRAM OUTCOME ATTAINMENT ANALYSIS (POAA)

BATCH: 2016 2019

WOMEN'S COLLEGE, TINSUKIA

Department :Philosophy														
Batch	No. of students	No. of students	Dropout %	No. of students	Pass %	No. of first class	% of first class	Vertical Progression	Horizontal Progression	% of Progression	No. of placement			Remarks
								No of students joined in PG	No. of students in other courses		Govt.	Private/ self-employed	Total	
2016-19	22	22	0	19	86%	17	89.5%	8	2	53%	1	4	5	

Department :Political Science														
Batch	Number of	No. of students	Dropout %	No. of students	Pass %	No. of first class	% of first class	Vertical Progression	Horizontal Progression	% of Progression	No. of placement			Remarks
								No of students joined in PG	No. of students in other courses		Govt.	Private/ self-employed	Total	
2016-19	39	38	2.6	33	87%	30	88	20	12	97.0%		3	3	

PROGRAM OUTCOME ATTAINMENT ANALYSIS (POAA)

BATCH: 2016 2019

WOMEN'S COLLEGE, TINSUKIA

Department :Sanskrit														
Batch	Number of students	No. of students	Dropout %	No. of students	Pass %	No. of first class	% of first class	Vertical Progression	Horizontal Progression	% of Progression	No. of placement			Remarks
								No of students joined in PG	No. of students in other courses		Govt.	Private/ self- employed	Total	
2016-19	3	3	0	3	100%	3	100			0		1	1	

PROGRAM OUTCOME ATTAINMENT ANALYSIS (POAA)

BATCH: 2016 2019

WOMEN'S COLLEGE, TINSUKIA

6. Graphical representation of POAA of the departments (2016-19 batch):

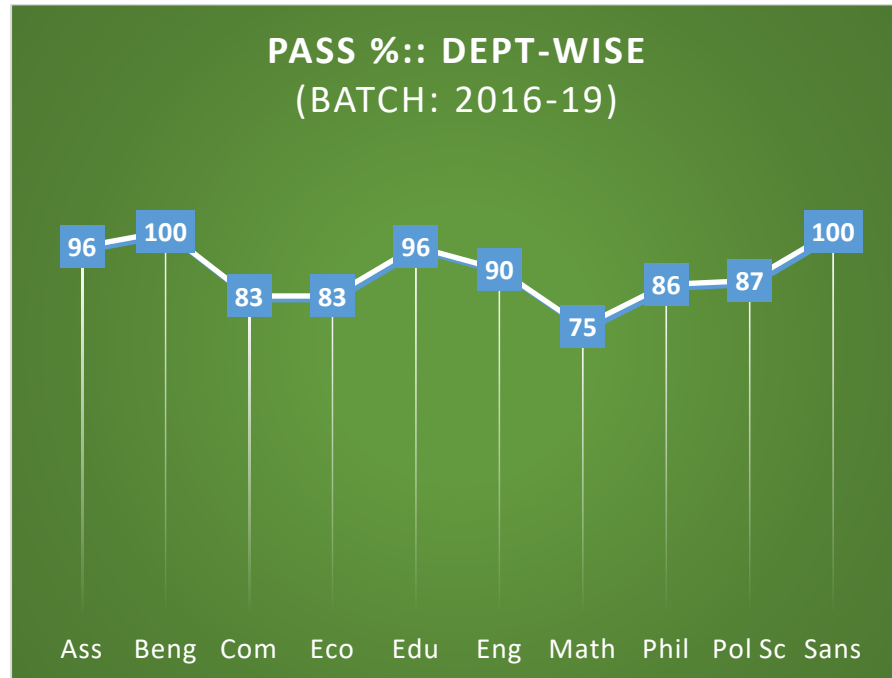


Fig.1: Pass Percentage: Department-wise

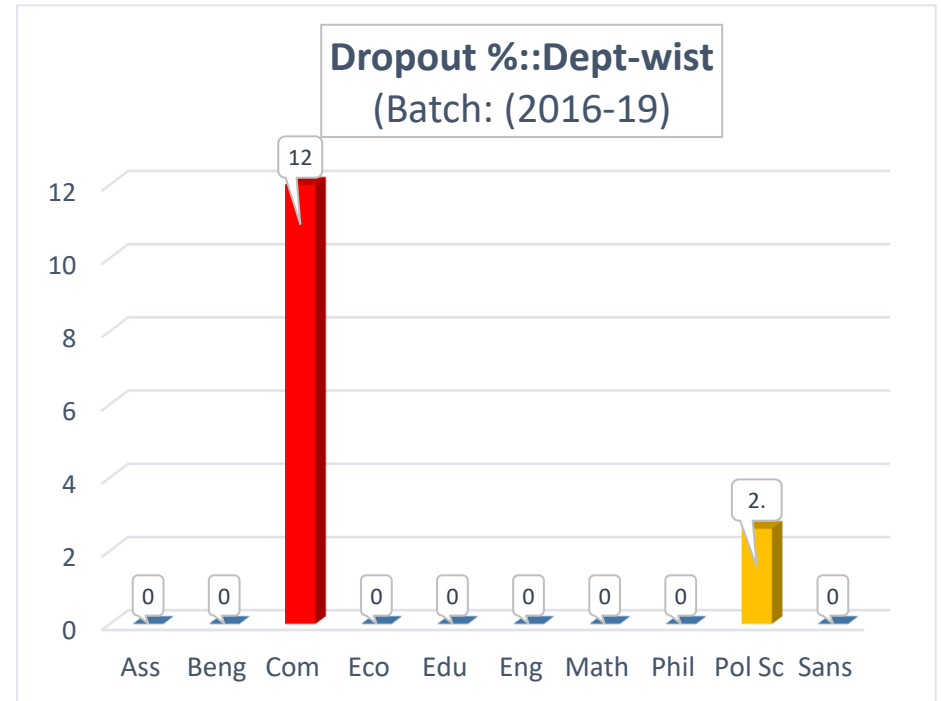


Fig.2 : Dropout Percentage: Department-wise

PROGRAM OUTCOME ATTAINMENT ANALYSIS (POAA)

BATCH: 2016 2019

WOMEN'S COLLEGE, TINSUKIA

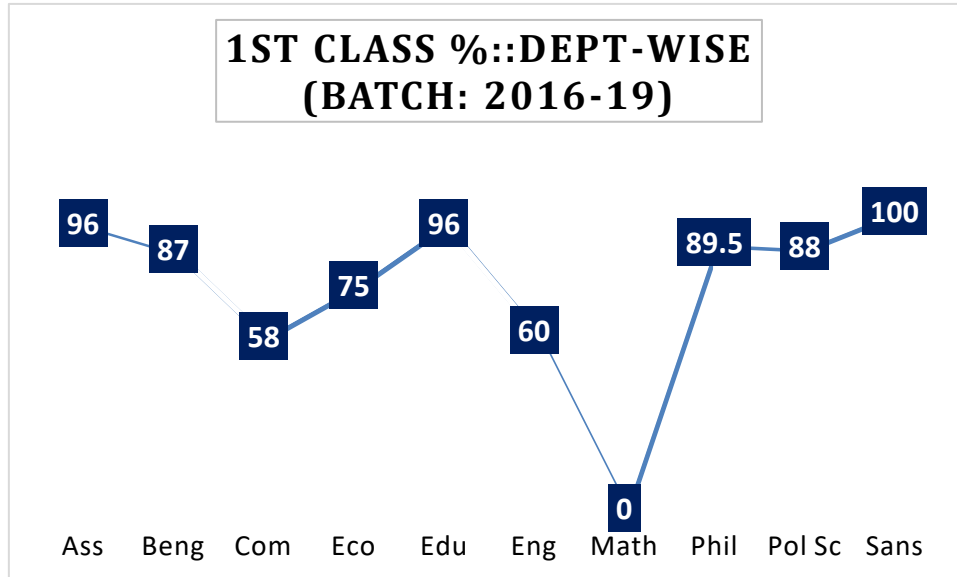


Fig.3: 1st Class Percentage: Department-wise

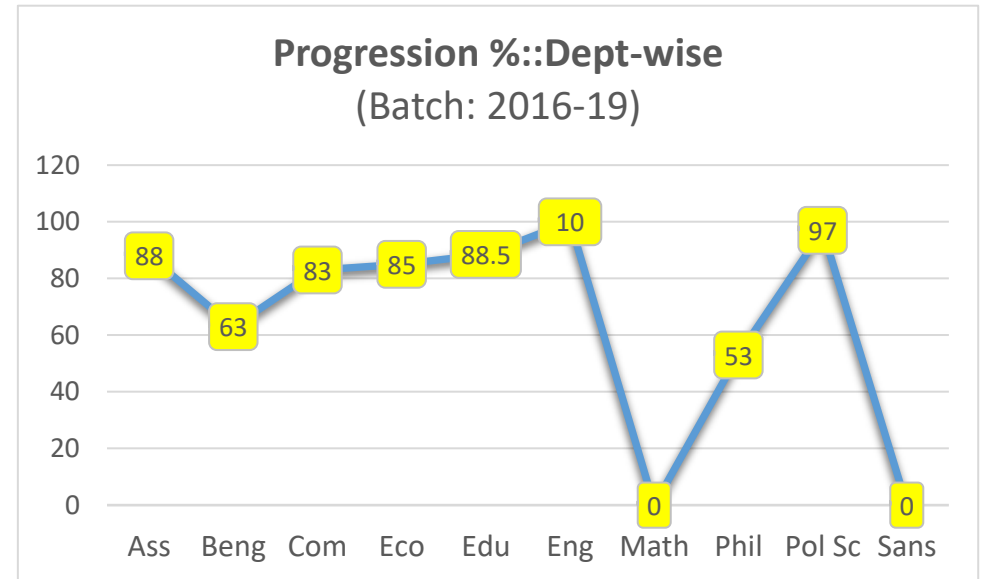


Fig.4: Progression Percentage: Department-wise

PROGRAM OUTCOME ATTAINMENT ANALYSIS (POAA)

BATCH: 2016 2019

WOMEN'S COLLEGE, TINSUKIA

7. Observations & Analysis:

7-1. DEPARTMENT: ASSAMESE

- (i) **CATEGORY- A: Pass Percentage:** Pass Percentage of the Department is very good. (Ref. Fig. No-1)
- (ii) **CATEGORY -B: Drop out Percentage:** Dropout percentage of the Department is NIL. (Ref. Fig. No-2)
- (iii) **CATEGORY -C: Quality Graduate:** 1st Class Graduate percentage of the Department is highly satisfactory. (Ref. Fig. No-3)
- (iv) **CATEGORY–D: Progression Percentage:** Progression percentage is satisfactory. (Ref. Fig. No-4).

7-2. DEPARTMENT: BENGALI

- (i) **CATEGORY- A: Pass Percentage:** Pass Percentage of the Department is excellent. (Ref. Fig. No-1)
- (ii) **CATEGORY -B: Drop out Percentage:** Dropout percentage of the Department is **NIL**. (Ref. Fig. No-2)
- (iii) **CATEGORY -C: Quality Graduate:** 1st Class Graduate percentage of the Department is very good. Specific attention is required to attain the number of quality graduates. (Ref. Fig. No-3)
- (iv) **CATEGORY–D: Progression Percentage:** Progression percentage is satisfactory. However, Special measures should be taken to enhance the rate of percentage of progression (Ref. Fig. No-4).

PROGRAM OUTCOME ATTAINMENT ANALYSIS (POAA)

BATCH: 2016 2019

WOMEN'S COLLEGE, TINSUKIA

7-3. DEPARTMENT: COMMERCE

- (i) **CATEGORY- A: Pass Percentage:** Pass Percentage of the Department is up to the mark. (Ref. Fig. No-1)
- (ii) **CATEGORY -B: Drop out Percentage:** Dropout percentage of the Department is on higher side. Specific attention is required to address the issue. (Ref. Fig. No-2)
- (iii) **CATEGORY -C: Quality Graduate:** 1st Class Graduate percentage of the Department is not satisfactory. Specific attention is required to enhance the quality graduates. (Ref. Fig. No-3)
- (iv) **CATEGORY–D: Progression Percentage:** Progression percentage is very satisfactory. (Ref. Fig. No-4).

7-4. DEPARTMENT: ECONOMICS

- (i) **CATEGORY- A: Pass Percentage:** Pass Percentage of the Department is very good. (Ref. Fig. No-1)
- (ii) **CATEGORY -B: Drop out Percentage:** Dropout percentage of the Department is NIL. (Ref. Fig. No-2)
- (iii) **CATEGORY -C: Quality Graduate:** 1st Class Graduate percentage of the Department is up to the mark. However, special measures should be taken to enhance the number of quality graduates. (Ref. Fig. No-3)
- (iv) **CATEGORY–D: Progression Percentage:** Progression percentage is very good. (Ref. Fig. No-4).

7-5. DEPARTMENT: EDUCATION

- (i) **CATEGORY- A: Pass Percentage** of the Department is **excellent**. (Ref. Fig. No-1)
- (ii) **CATEGORY -B: Drop out Percentage** of the Department is NIL (Ref. Fig. No-2), which is a great indication of the department's good services towards wellbeing of students.
- (iii) **CATEGORY -C: Quality Graduate:** 1st Class Graduate percentage of the Department is extra ordinary. (Ref. Fig. No-3)
- (iv) **CATEGORY–D: Progression Percentage** is on slightly lower side. Special measures should be taken. (Ref. Fig. No-4).

PROGRAM OUTCOME ATTAINMENT ANALYSIS (POAA)

BATCH: 2016 2019

WOMEN'S COLLEGE, TINSUKIA

7-6. DEPARTMENT: ENGLISH

- (i) **CATEGORY- A: Pass Percentage:** Pass Percentage of the Department is very good. (Ref. Fig. No-1)
- (ii) **CATEGORY -B: Drop out Percentage:** Dropout percentage of the Department is NIL. (Ref. Fig. No-2)
- (iii) **CATEGORY -C: Quality Graduate:** 1st Class Graduate percentage of the Department is up to the mark. However, it requires special attention to enhance the quality graduate. (Ref. Fig. No-3)
- (iv) **CATEGORY–D: Progression Percentage:** Progression percentage is very good. (Ref. Fig. No-4).

7-7. DEPARTMENT: MATHEMATICS

- (i) **CATEGORY- A: Pass Percentage:** Pass Percentage of the Department is satisfactory. (Ref. Fig. No-1)
- (ii) **CATEGORY -B: Drop out Percentage:** Dropout percentage of the Department is NIL. (Ref. Fig. No-2)
- (iii) **CATEGORY -C: Quality Graduate:** 1st Class Graduate percentage of the Department is NIL. It needs to be treated very seriously to enhance the quality graduate. (Ref. Fig. No-3)
- (iv) **CATEGORY–D: Progression Percentage:** Progression percentage is found NIL. It requires specific attention. (Ref. Fig. No-4).

7-8. DEPARTMENT: PHILOSOPHY

- (i) **CATEGORY- A: Pass Percentage:** Pass Percentage of the Department is satisfactory. (Ref. Fig. No-1)
- (ii) **CATEGORY -B: Drop out Percentage:** Dropout percentage of the Department is NIL. (Ref. Fig. No-2)
- (iii) **CATEGORY -C: Quality Graduate:** 1st Class Graduate percentage of the Department is very good. (Ref. Fig. No-3)
- (iv) **CATEGORY–D: Progression Percentage:** Progression percentage of the Department is satisfactory. However, special care should be taken to enhance the rate of progression percentage (Ref. Fig. No-4).

PROGRAM OUTCOME ATTAINMENT ANALYSIS (POAA)

BATCH: 2016 2019

WOMEN'S COLLEGE, TINSUKIA

7-9. DEPARTMENT: POLITICAL SCIENCE

- (i) **CATEGORY- A: Pass Percentage:** Pass Percentage of the Department is very good. (Ref. Fig. No-1)
- (ii) **CATEGORY -B: Drop out Percentage:** Dropout percentage of the Department is on slightly higher side. It needs to be addressed (Ref. Fig. No-2)
- (iii) **CATEGORY -C: Quality Graduate:** 1st Class Graduate percentage of the Department is good. However it requires specific attention to enhance the number of quality graduate. (Ref. Fig. No-3)
- (iv) **CATEGORY–D: Progression Percentage:** Progression percentage of the Department is exceptional. (Ref. Fig. No-4).

7-10. DEPARTMENT: SANSKRIT

- (i) **CATEGORY- A: Pass Percentage:** Pass Percentage of the Department is excellent. (Ref. Fig. No-1)
- (ii) **CATEGORY -B: Drop out Percentage:** Dropout percentage of the Department is NIL (Ref. Fig. No-2)
- (iii) **CATEGORY -C: Quality Graduate:** 1st Class Graduate percentage of the Department is extra ordinary. (Ref. Fig. No-3)
- (iv) **CATEGORY–D: Progression Percentage:** Progression percentage of the Department is NIL (Ref. Fig. No-4).



Dr. Rajib Bordoloi
Principal